

ANGLE BROOM HEAVY DUTY SERIES 2

Operation and Maintenance Manual



Register your
WARRANTY
within 30 days
of purchase



888-376-7027 | BlueDiamondAttachments.com

Blue Diamond@Attachments



Introduction 4

 Owner Information 4

 Serial Number Location 4

 Attachment Identification 5

Safety 6

 Safety Information 6

 Safe Operation Needs A Qualified Operator 7

 Importance of Safety 7

Operation 9

 General Information 9

 Pre-Operation Inspection 9

 Attachment Inspection 10

 Daily Inspection 10

 Weekly Inspection 10

 Monthly Inspection 10

 Attachment Installation 11

 Entering The Operator’s Position 11

 Leaving The Operator’s Position 11

 Connecting Attachment To The Machine 11

 Connecting Hydraulic Hoses 12

 Disconnecting Hydraulic Hoses 12

 Disconnecting Attachment From The Machine 12

 Operating The Attachment 13

 Machine Requirements 13

 Operation 13

Maintenance 16

 Maintenance Safety 16

 General Maintenance 16

 Lubrication 17

 Broom Shaft Coupler 17

 Broom Angle Vertical Pivot 17

 Right Side Bearing 17

 Removal and Installation 18

 Broom Core 18

 Broom Wafers 18

 Broom Motor 19

 Bearing 19

 Cleaning The Attachment 20

Table Of Contents

| | |
|---------------------------------------|----|
| Parts | 21 |
| Attachment Assembly | 21 |
| Specifications | 31 |
| Attachment Specifications | 31 |
| Dimensions | 31 |
| Performance | 32 |
| Torque Specifications | 33 |
| Standard Hardware And Lock Nuts | 33 |
| Warranty | 34 |

Owner Information

Thank you for your decision to purchase a Blue Diamond heavy duty angle broom series 2. To ensure maximum performance of your equipment, it is mandatory that you thoroughly study the Operator's Manual and follow the recommendations. Proper operation and maintenance are essential to maximize equipment life and prevent personal injury.

Operate and maintain this equipment in a safe manner and in accordance with all applicable local, state, and federal codes, regulations and / or laws. Follow all on-product labeling and instructions.

Make sure that all personnel have read this Operator's Manual and thoroughly understand safe and correct operating, installation and maintenance procedures.

Blue Diamond is continually working to improve its products. Blue Diamond reserves the right to make any improvements or changes as deemed practical and possible without incurring any responsibility or obligation to make any changes or additions to equipment sold previously.

Although great care has been taken to ensure the accuracy of this publication, Blue Diamond makes no warranty or guarantee of any kind, written or expressed, implied or otherwise with regard to the information contained within this manual. Blue Diamond assumes no responsibility for any errors that may appear in this manual and shall not be liable under any circumstances for incidental, consequential or punitive damages in connection with, or arising from the use of this manual.

Keep this manual available for frequent reference. All new operators or owners must review the manual before using the equipment and annually thereafter. Contact your Blue Diamond Attachments Dealer for assistance, information, or additional copies of the manual. Contact www.bluediamondattachments.com or call 888-376-7027 for a complete list of dealers in your area.

Serial Number Location

Please record attachment information in the space provided for future reference.



Figure 1

Model Number: _____

Serial Number: _____

Dealer Name: _____

Dealer Number: _____

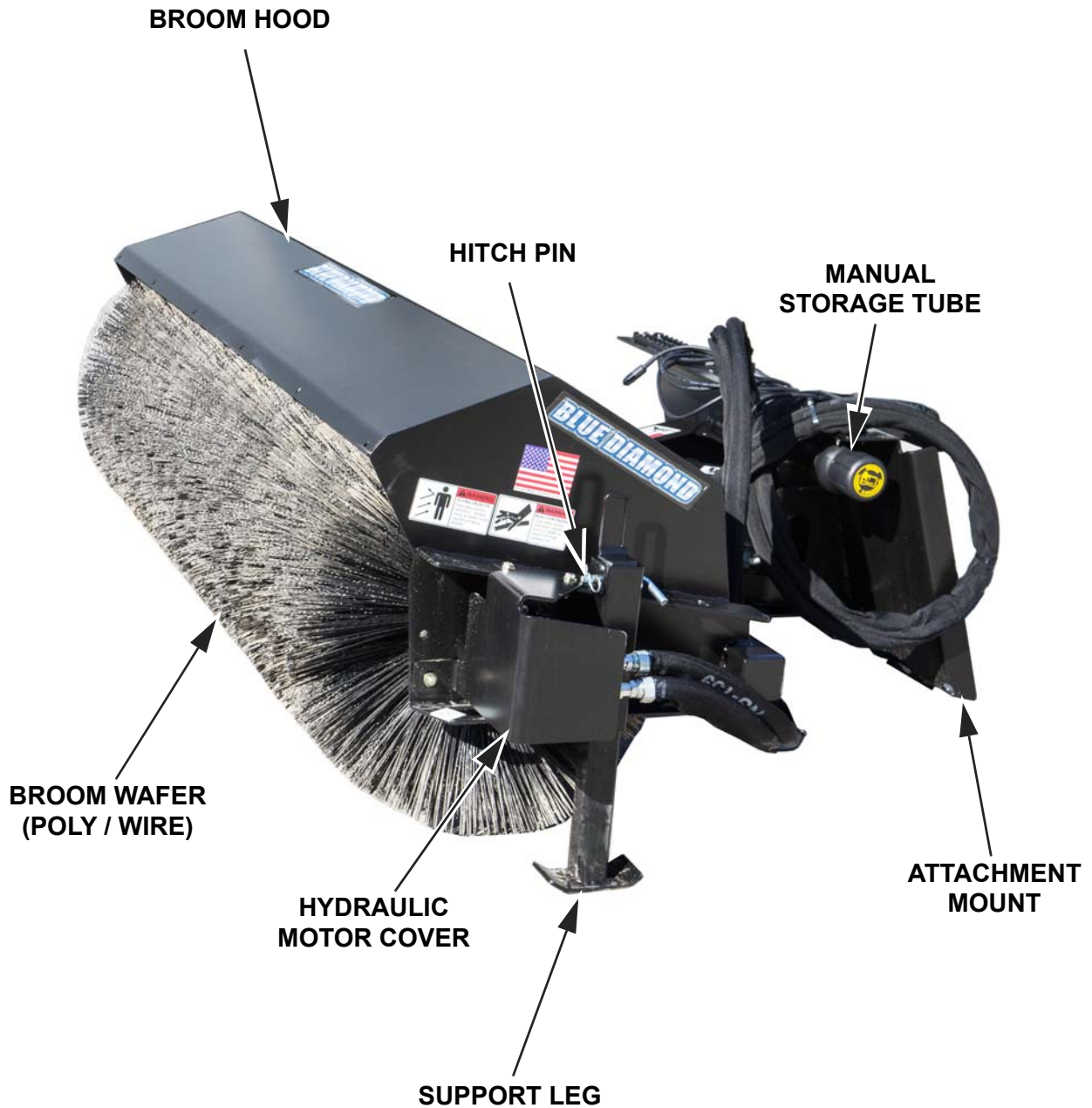
Date of Purchase: _____

The serial number plate (Item 1) [Figure 1] is located on top right side of angle broom pivot.

Always use your serial number when requesting information or when ordering parts.

NOTE: The directions left, right, front and rear, as mentioned throughout this manual, are as viewed from the operator's position.

Attachment Identification



Safety Information



SAFETY ALERT SYMBOL

This **SAFETY ALERT SYMBOL** identifies important safety messages on the equipment and in the owner's manual. When you see this symbol, be alert to the possibility of personal injury and carefully read the message that follows.



DANGER

The signal word **DANGER** on the machine and in the manuals indicates a hazardous situation which, if not avoided, will result in death or serious injury.



WARNING

The signal word **WARNING** on the machine and in the manuals indicates a potentially hazardous situation which, if not avoided, could result in death or serious injury.



CAUTION

The signal word **CAUTION** on the machine and in the manuals indicates a potentially hazardous situation which, if not avoided, may result in minor or moderate injury. It may also be used to alert against unsafe practices.



IMPORTANT

The signal word **IMPORTANT** identifies procedures which must be followed to avoid damage to the machine.

Safe Operation Needs A Qualified Operator



WARNING

AVOID SERIOUS INJURY OR DEATH

Operators must receive instructions before operating the machine. Untrained operators can cause serious injury or death.

For an operator to be qualified, he or she must not use drugs or alcoholic drinks which impair alertness or coordination while working. An operator who is taking prescription drugs must get medical advice to determine if he or she can safely operate a machine and the equipment.

Operator Training

- Check the rules and regulations at your location. The rules may include an employer's work safety requirements. Regulations may apply to local driving requirements or use of a Slow Moving Vehicle (SMV) emblem. Regulations may identify a hazard such as a utility line.
- The new operator must start in an area without bystanders and use all the controls until he or she can operate the machine safely under all conditions of the work area.

Importance of Safety

Operating Safety

- Read and follow instructions in this manual and the machine's Operators Manual before operating.
- Under no circumstances should young children be allowed to work with this equipment.
- This equipment is dangerous to persons unfamiliar with its operation.
- Check for overhead and / or underground lines before operating equipment (if applicable).
- In addition to the design and configuration of equipment, hazard control and accident prevention are dependent upon the awareness, concern, prudence and proper training of personnel involved in the operation, transport, maintenance and storage of equipment.
- Check that the attachment is securely fastened to the machine.
- Make sure all the machine controls are in the NEUTRAL before starting the machine.
- Operate the equipment only from the operator's position.
- Operate the equipment according to the Operator's Manual.
- When learning to operate the equipment, do it at a slow rate in an area clear of bystanders.
- DO NOT permit personnel to be in the work area when operating the equipment.
- The equipment must be used ONLY on approved machines.
- DO NOT modify the equipment in any way. Unauthorized modification may impair the function and / or safety and could affect the life of the equipment.
- DO NOT make any adjustments or repairs on the equipment while the machine is running.
- Keep shields and guards in place. Replace if damaged.
- DO NOT operate equipment in poor visibility conditions such as fog, darkness, or any conditions that limit clear visibility less than 300 feet (100 m) in front of and to the sides of the equipment.
- When conditions make it necessary to slow ground speed, shift to a lower gear rather than reducing engine speed. The engine will maintain rated speed and keep cutter running at optimum cutting speed.
- DO NOT operate in a work area that has not been inspected for foreign debris and obstacles.
- Remove any foreign objects and clearly mark any objects that cannot be removed.
- Wear safety glasses, gloves, hearing protection and other protective clothing when required.

Machine Requirements And Capabilities

- The machine's operator's cab should be equipped with a thermoplastic polycarbonate or similar material front window, and similar protection on the sides of the operator's cab before operating the equipment.
- Keep bystanders clear of moving parts and the work area. Keep children away.
- Do Not exceed 3500 psi (241 bar) operating pressure.
- Use caution on slopes and near banks and ditches to prevent overturn.

Importance of Safety Cont'd

Fire Prevention Safety

- Flammable debris (leaves, grass, etc.) must be removed regularly. If flammable debris is allowed to accumulate, it can cause a fire hazard. Clean often to avoid this accumulation.
- The equipment's hydraulic motor compartment must be inspected every day and cleaned if necessary to prevent fire hazards and overheating.
- All fuels, most lubricants and some coolant mixtures are flammable. Flammable fluids that are leaking or spilled onto hot surfaces or onto electrical components can cause a fire.

Transporting Safety

- Comply with state and local laws governing highway safety and movement of machinery on public roads.
- Check local laws for all highway lighting and marking requirements.
- Always yield to oncoming traffic and move to the side of the road so any following traffic may pass.
- Never allow riders on either machine or equipment.
- If transporting the brush cutter on a truck or trailer, make sure the brush cutter is properly secured to the transport vehicle.

Hydraulic System

- Check hydraulic tubes, hoses and fittings for damage and leakage. Never use open flame or bare skin to check for leaks. Hydraulic tubes and hoses must be properly routed and have adequate support and secure clamps. Tighten or replace any parts that show leakage.
- Always clean fluid spills. Do not use gasoline or diesel fuel for cleaning parts. Use commercial nonflammable solvents.

General Information

Pre-Operation Inspection

Before operating the heavy duty angle broom series 2 for the first time and each time thereafter, use the following list as a guideline during equipment inspection.



WARNING



AVOID SERIOUS INJURY OR DEATH

- Disengage machine's auxiliary hydraulics, engage the machine's parking brake, stop the engine and make sure all rotating components are completely stopped before connecting, disconnecting, adjusting or cleaning equipment.
 - Always keep shields and all guards in place when using the equipment.
 - Disengage machine's auxiliary hydraulics for road travel.
 - Keep hands, feet and clothing away from rotating parts.
-
- Fully clean the attachment. See "Cleaning The Attachment" on page 31.
 - Lubricate the attachment as explained in the Maintenance Section. See "Lubrication" on page 28.
 - Check the angle broom mounting plate for damage. Check for loose or missing parts. Repair as needed before operation.
 - Check that broom wafers are in good condition. Replace them as necessary.
 - Check that all shields and guards are in place.
 - Check for loose bolts and tighten them if necessary.

- Check all welds on the attachment for wear and damage each time the attachment is removed from the machine.
- Check for damaged or missing safety decals. Replace if necessary.
- Inspect the machine's mounting frame. (See the machine's Operator's Manual for inspecting the mounting frame). Replace any parts that are damaged, bent or missing. Keep all fasteners tight. Look for cracked welds.



WARNING



Leaking fluids under pressure can enter the skin and cause serious injury or death. Immediate medical attention is required. Wear goggles. Use cardboard to check for leaks.

- Check condition of all hydraulic components for leaks. Repair as required.
- NOTE:** Do not operate with hydraulic leaks.
- Verify that the angle broom is properly connected to the machine.

Attachment Inspection

Daily Inspection

NOTE: Inspect the attachment by performing a walk around daily before and after use. Use the following inspection checklist as a guideline.

Check the following items every 10 hours of operation:

- Verify that the angle broom is properly connected to the machine.
- Check that all shields and guards are in place.
- Check hydraulic lines, connections and fittings for hydraulic oil leaks. Repair or replace damaged parts if necessary.
- Check the angle broom mounting hardware for wear or damage. Inspect the pins and mount (on the attachment) for wear or damage. Repair or replace damaged parts if necessary.

Weekly Inspection

Check the following items every 40 hours of operation:

- Check all bolts for tightness.
- Inspect the frame for cracks, bends, or damage.

Monthly Inspection

- Inspect the broom wafers for excessive wear.
- Check that all bolts are tight.
- Check frame, shields and guards. Repair if damaged or replace if necessary.
- Check for damaged or missing decals. Replace if necessary.
- Check for damaged or leaking hydraulic hoses or fittings. Replace if necessary.
- Clean all debris, leaves, grass and flammable material from deck area and under covers.
- Lubricate as required.



WARNING



AVOID SERIOUS INJURY OR DEATH

Before servicing the attachment:

- **Always park on a flat level surface.**
- **Lower lift arms and place attachment flat on the ground.**
- **Place all controls in NEUTRAL.**
- **Engage the park brake.**
- **Wait for all moving parts to stop.**
- **Stop the engine and remove the key.**

SEE MACHINE'S OPERATOR'S MANUAL FOR ADDITIONAL INFORMATION.

Attachment Installation

! IMPORTANT !



See the machine's Operator's Manual for detailed information on operating the loader.

Entering The Operator's Position

Use the attachment safety treads, handles and steps (on the machine) to enter the operator's position.

When in the operator's position, lower safety seat bar, start the engine and release the parking brake.

Leaving The Operator's Position

! WARNING !

AVOID SERIOUS INJURY OR DEATH

Before leaving the operator's position:

- Always park on a flat level surface.
- Lower lift arms and place attachment flat on the ground.
- Place all controls in **NEUTRAL**.
- Engage the park brake.
- Stop the engine and remove the key.
- Wait for all moving parts to stop.

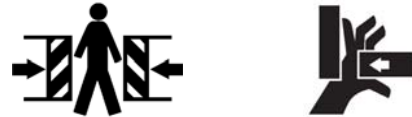
SEE MACHINE'S OPERATOR'S MANUAL FOR ADDITIONAL INFORMATION.

Park the machine / attachment on a flat level surface.

Place all controls in neutral, engage the park brake, stop the engine and wait for all moving parts to stop. Leave the operator's position.

Connecting Attachment To The Machine

! WARNING !



CRUSH HAZARD

- Before moving the machine, look in all directions and make sure no bystanders, especially small children are in the work area. Do not allow anyone between the machine and attachment when approaching the attachment for connecting.
- Keep fingers and hands out of pinch points when connecting and disconnecting attachment.

Before connecting to the attachment, inspect the machine's mounting plate. (See the machine's Operator's Manual for inspecting the mounting frame).

Enter the operator's position. See "Entering The Operator's Position" on page 19.

Drive the machine slowly forward, until the top edge of the machine's mounting plate is under the top flange of the attachment mounting frame.

Connecting Attachment To The Machine Cont'd

Slowly tilt the machine's mounting plate back until the attachment mounting frame fully contacts the front of the machine's mounting plate.

Leave the operator's position. See "Leaving The Operator's Position" on page 19.



AVOID SERIOUS INJURY OR DEATH

The locking pins / wedges must extend through the holes in the attachment mounting frame. Failure to secure locking pins / wedges can allow attachment to come off.

SEE MACHINE'S OPERATOR'S MANUAL FOR ADDITIONAL INFORMATION.

Engage attachment locking levers / wedges (See the machine's Operator's Manual for detailed information).

Connecting Hydraulic Hoses



- **Thoroughly clean the quick couplers before making connections. Dirt can quickly damage the hydraulic system.**

Remove dirt or debris from the male and female couplers. Visually inspect the couplers for corroding, cracking, damage, or excessive wear. Replace as needed.

Connect the attachment hydraulic hoses to the machine. Pull on each hose to verify full connection is made.

Disconnecting Hydraulic Hoses



AVOID BURNS

Hydraulic fluid, tubes, fittings and quick couplers can get hot during operation. Be careful when connecting and disconnecting hydraulic hoses.

Relieve auxiliary hydraulic pressure. (See the machine's Operator's Manual for correct procedure.)

Disconnect attachment hydraulic hoses from the machine.

Disconnecting Attachment From The Machine

Relieve auxiliary hydraulic pressure. (See the machine's Operator's Manual for correct procedure.)

Park the machine and attachment on a flat level surface. Lower the attachment flat on the ground.

Leave the operator's position. See "Leaving The Operator's Position" on page 19.

Disconnect attachment hydraulic hoses from the machine.

Disengage locking pins / wedges. (See the machine's Operator's Manual for correct procedure.)

Enter the operator's position. See "Entering The Operator's Position" on page 19.

Slowly tilt the machine's mounting plate forward until the attachment mounting frame is free from the machine's mounting plate.

Drive the machine slowly backward, away from the attachment.

Operating The Attachment

Machine Requirements



FLYING DEBRIS OR OBJECTS WILL CAUSE SERIOUS INJURY OR DEATH

To protect the operator from any flying debris or objects, it is important that the machine's operator's cab should be equipped with a thermoplastic polycarbonate or similar material front window, and similar protection on the sides of the operator's cab before operating the heavy duty angle broom series 2.

- It's recommended that the machine be equipped with a thermoplastic polycarbonate or similar material front window, and similar protection on the sides of the operator's cab.
- Only use broom on compatible loaders. Loader flow must not exceed 25 gallons per minute. DO NOT USE high flow hydraulics.
- Loader relief pressure must not exceed 3500 psi (241 bar). Consult loader manual for flow and pressure specifications.
- See chart below for minimum lift capacity required for each angle broom model.

| HEAVY DUTY ANGLE BROOM MODEL | WEIGHT |
|------------------------------|-------------------|
| 60" | 760 lbs. (345 kg) |
| 72" | 825 lbs. (374 kg) |
| 84" | 905 lbs. (411 kg) |

Operation



THROWN OBJECTS CAN CAUSE SERIOUS INJURY OR DEATH

- Clear work area of all debris, such as rope, wire, cable or other materials that can wrap around broom core and broom wafers, causing entanglement and attachment damage.
- DO NOT operate angle broom in vicinity of bystanders, animals, or damageable property. Objects can be thrown several feet.
- Keep all shields installed. Repair or replace if damaged or missing.
- Check broom core, broom wafers, and mounting hardware. Replace if damaged.



AVOID SERIOUS INJURY OR DEATH

- Never operate the angle broom with any guards removed, including the motor cover.



Never allow riders on the angle broom.

Operation (Cont'd)

Using the Angle Broom

Install the heavy duty angle broom series 2 onto the machine.

Move storage feet to the upper position.

Move to the operator's position, lower seat bar, start the engine and release the parking brake.

Raise the angle broom approximately 6 in. (152 mm) off the ground.

With the machine's engine RPM just above idle, engage the auxiliary hydraulic flow (see the machine's operator's manual) to the cutter head.

Slowly raise the machine's engine RPM to the correct and desired cutter speed.



CAUTION



DO NOT exceed 3500 PSI operating pressure. Serious damage can result.

Adjust angle broom so the broom pivot pin is perpendicular to the ground, this ensures even sweeping when the broom is angled. The ends of the broom will rise or lower when angled if broom pivot pin is not perpendicular to the ground.

Limit travel speed to 5 mph.

Adjust brush using loader tilt to give a 2"- 4" wide pattern. Excessive down force will prematurely wear wafers.

Slow down in heavy material. Allow time for the broom to sweep.

Storage

DO NOT store the polypropylene brush wafers in direct sun light. The material can deteriorate.

Park the machine and attachment on a flat level surface.

Raise broom housing, keeping the broom wafers 2"- 4" above the ground.

Relieve auxiliary hydraulic pressure. (See the machine's Operator's Manual for correct procedure.)

Leave the operator's position. See "Leaving The Operator's Position" on page 19.

Remove storage feet pins and move storage feet to lower position and replace pins.

Disconnect attachment hydraulic hoses from the machine.

Disengage locking pins / wedges. (See the machine's Operator's Manual for correct procedure.)

Enter the operator's position. See "Entering The Operator's Position" on page 19.

Lower angle broom setting the storage feet on the ground.

Slowly tilt the machine's mounting plate forward until the attachment mounting frame is free from the machine's mounting plate.

Drive the machine slowly backward, away from the attachment.

Operation (Cont'd)

Angling Broom (Manual Angle)

Raise the broom slightly above the ground with the pivot pin vertical. Remove angle pin connecting the two angle links.

Manually Swing the broom all the way left or right and replace angle link pin.

Angling Broom (Hydraulic Angle)

Activate electrical control (in cab or optional control box) to select angle function. Then actuate loader auxiliary hydraulics to swing left or right. Deactivate electrical control to actuate broom motor.

NOTE: Broom angle cannot be adjusted while sweeping.

Water Kit (Optional)

Check the strainer bowl daily for dirt and debris. This debris can plug the nozzles.

Check nozzles daily for debris. Remove and clean plugged nozzles.

Maintenance Safety



WARNING



AVOID SERIOUS INJURY OR DEATH

Never operate the machine in a closed building. Proper ventilation is required when operating the machine under all circumstances.

- Always keep the work area clean and dry.
- Always use personal protection devices such as eye, hand and hearing protection when performing any service or maintenance.
- A fire extinguisher and first aid kit should be readily accessible while performing maintenance on this machine.
- Before working or doing maintenance on this machine, shut off the engine and remove the key. Make sure the machine's wheels are blocked.
- Never work under the machine or attachment unless the machine or equipment is blocked or supported securely.
- Disconnect the battery (both terminals) before welding on any part of the machine. Failure to do so may cause damage to electrical components.
- When working around batteries, remember that all of the exposed metal parts are "live". Never lay a metal object across the terminals because a spark, short circuit, explosion or personal injury may result.
- Battery posts, terminals and related accessories contain lead and lead compounds. **Wash hands after handling.**
- Always relieve hydraulic system pressure before repairing, adjusting or disconnecting. Never search for leaks with your hands. (See "Hydraulic System" on page 13.)
- When replacement parts are necessary, genuine factory replacement parts must be used to restore your equipment to original specifications. Blue Diamond will not be responsible for injuries or damage caused by use of unapproved parts and / or accessories.

- When completing service or maintenance on this machine, make sure all shields and guards are installed before placing the machine into service.

General Maintenance



WARNING



AVOID SERIOUS INJURY OR DEATH

Before operating or servicing system: Read and understand the machine's owners manual. Follow the warnings and instructions in the manual when making repairs, adjustments, or servicing. Check for correct function after adjustments, repairs or service. Untrained operators and failure to follow instructions can cause injury or death.

To ensure efficient operation, you should inspect, lubricate, and make necessary adjustments and repairs at regular intervals. Keep good maintenance records and adequately clean your machine after each use.

Proper lubrication is important. Follow all lubrication instructions and schedules included in this section.

Daily Inspection:

- All components and hardware to ensure equipment is secure and thoroughly tightened.
- Frame and all welds for cracks or damage.
- Mounting frame for proper operation and signs of damage or unusual wear.
- Safety signs and reflectors for damage. Replace any missing or damaged decals.
- Broom wafers for excessive wear or damage.
- Hydraulic hoses and fittings for wear, damage or leaks.

NOTE: Repair or replace any damaged parts.

NOTE: After initial use, or repair/replacement of damaged parts, it is important to check the repaired or replaced parts for proper bolt torque and operation.

Lubrication



IMPORTANT



Fluid such as hydraulic fluid, coolants, grease, etc. must be disposed of in an environmentally safe manner. Some regulations require that certain spills and leaks on the ground must be cleaned in a specific manner. See local, state and federal regulations for the correct disposal.

Grease the following lube points **EVERY 40 HOURS** (weekly). Always use a quality lithium base multi purpose grease when lubricating the attachment.

Broom Shaft Coupler

This zerk is located on the left side of the broom core near the motor. It can be accessed through the wafers.

Apply 3-4 pumps of grease to the grease zerk.

Broom Angle Vertical Pivot

This zerk is located at the left side of vertical angle pivot.

Apply 3-4 pumps of grease to the grease zerk.

Right Side Bearing

These two zerks are located on the bearing located on the right side of the broom. Grease either of the two zerks, both do not need greased.

Apply 3-4 pumps of grease to the grease zerk.

Removal and Installation



DANGER



AVOID SERIOUS INJURY OR DEATH

Before servicing the Angle Broom:

- Lower the lift arms and place the angle broom on flat, level surface.
- Engage parking brake, stop engine and exit the machine.
- Disconnect attachment hydraulic hoses.

Broom Core

See parts section for parts diagrams.

1. Park the machine and attachment on a flat level surface. Lower the attachment flat on the ground.
2. Leave the operator's position. See "Leaving The Operator's Position" on page 19.
3. Disconnect attachment hydraulic hoses from the machine.
4. Remove motor guard hardware and motor guard.
5. Remove motor to broom housing hardware and remove motor subassembly. Motor hoses can remain connected.
6. Remove bearing broom housing hardware and remove bearing.
7. Using the skid loader or a hoist, raise broom housing off of broom core. Roll broom core away from bucket.
8. To install broom core, repeat the steps in reverse order.

Broom Wafers

See parts section for parts diagrams.

1. Park the machine and attachment on a flat level surface. Lower the attachment flat on the ground.
2. Leave the operator's position. See "Leaving The Operator's Position" on page 19.
3. Disconnect attachment hydraulic hoses from the machine.
4. Remove broom core. See "Broom Core" on page 29.
5. Remove broom drum retaining plate from end of broom core.
6. Stand broom core on end with assembled retaining plate and remove broom wafers.
7. Install new wafer making sure wafer retention pins are trapped on broom drum bar.
8. Install remaining broom wafers alternating steel and poly wafers. The retention pins on consecutive wafers should alternate 180 degrees and be trapped by opposite bars.
9. Install last broom wafer and install broom drum retaining plate. Carefully lay the broom core on it's side.
10. Move broom core under broom housing and lower housing on core.
11. Replace bearing plate and motor plate hardware. Tighten hardware.
12. Replace motor and bearing and hardware. Tighten hardware.
13. Reinstall rubber skirting and side skirting retainers. Tighten hardware.

Broom Motor

See parts section for parts diagrams.

1. Park the machine and attachment on a flat level surface. Lower the attachment flat on the ground.
2. Leave the operator's position. See "Leaving The Operator's Position" on page 19.
3. Disconnect attachment hydraulic hoses from the machine.
4. Remove motor guard hardware and motor guard. Remove and cap motor hoses.
5. Remove motor hardware and remove motor subassembly from broom housing.
6. Remove coupler bolt and loosen coupler set screw. Remove coupler from motor shaft.
7. Remove motor.
8. Reassemble in reverse order.

Bearing

See parts section for parts diagrams.

1. Park the machine and attachment on a flat level surface. Lower the attachment flat on the ground.
2. Leave the operator's position. See "Leaving The Operator's Position" on page 19.
3. Disconnect attachment hydraulic hoses from the machine.
4. Remove bearing broom housing hardware.
5. Loosen bearing lock collar.

NOTE: Use a drift punch and hammer. Counter clockwise loosens collar.

6. Remove bearing.
7. Reassemble in reverse order.

NOTE: To tighten bearing lock collar, use hammer and drift punch. Clockwise movement tightens collar.

Cleaning The Attachment

**DANGER**

AVOID SERIOUS INJURY OR DEATH

Before servicing the Angle Broom:

- **Disconnect attachment hydraulic hoses.**
- **Fully lower the lift arms and tilt angle broom forward (down) until the support feet contact the ground.**
- **Engage parking brake, stop engine and exit the machine.**

Park the machine and attachment on a flat level surface. Lower the attachment flat on the ground.

Leave the operator's position. See "Leaving The Operator's Position" on page 19.

Disconnect attachment hydraulic hoses from the machine.

Enter the operator's position. See "Entering The Operator's Position" on page 19.

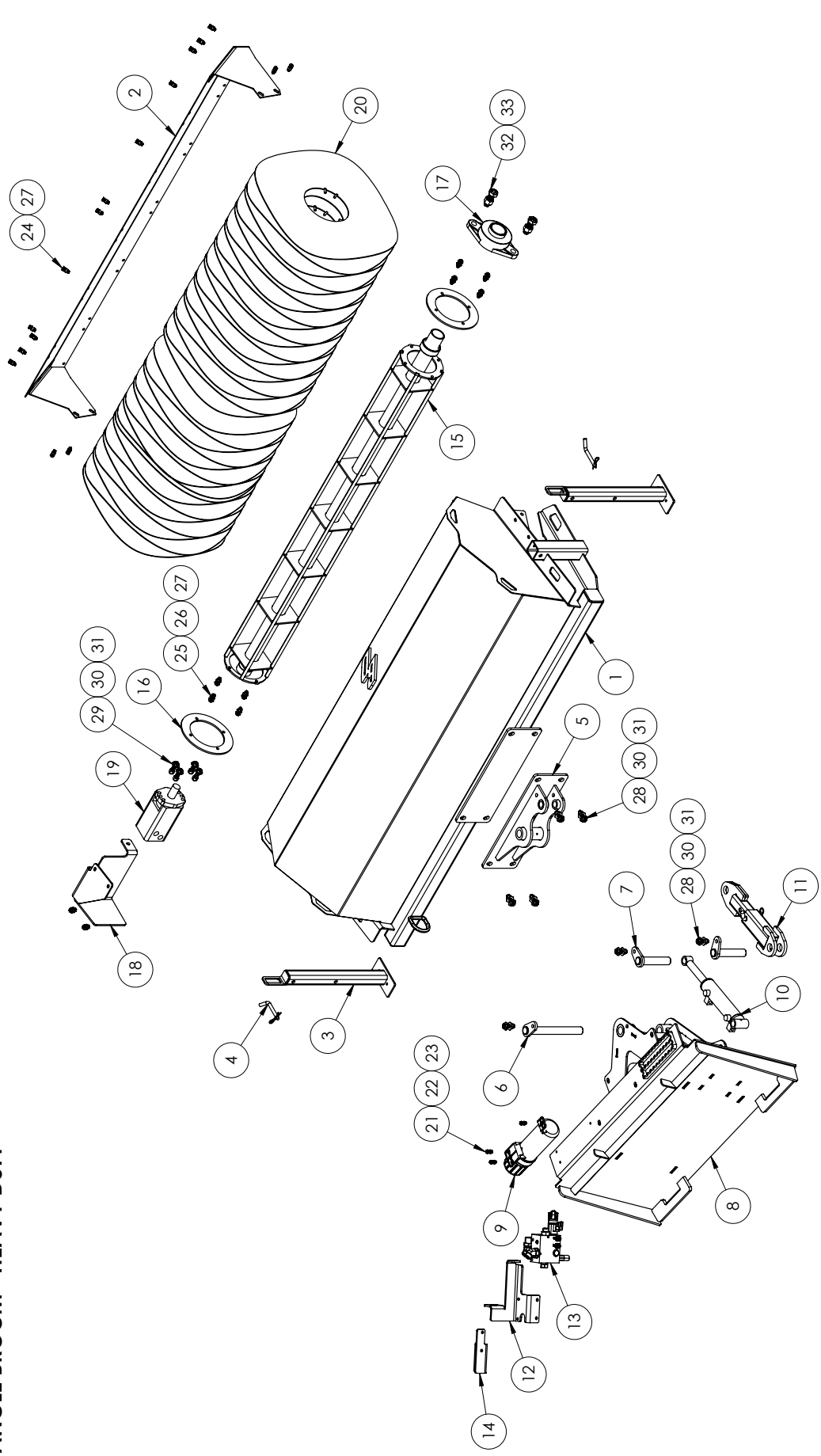
Start the engine, fully lower the machine's lift arms, while tilting the angle broom forward (down) until the support feet contact the ground.

Stop the engine, engage parking brake and leave the operator's position. See "Leaving The Operator's Position" on page 19.

Use water or air pressure to clean debris from under the angle broom frame / shields.

Be careful when removing any obstructions that are wrapped around broom core or broom wafers.

ANGLE BROOM - HEAVY DUTY

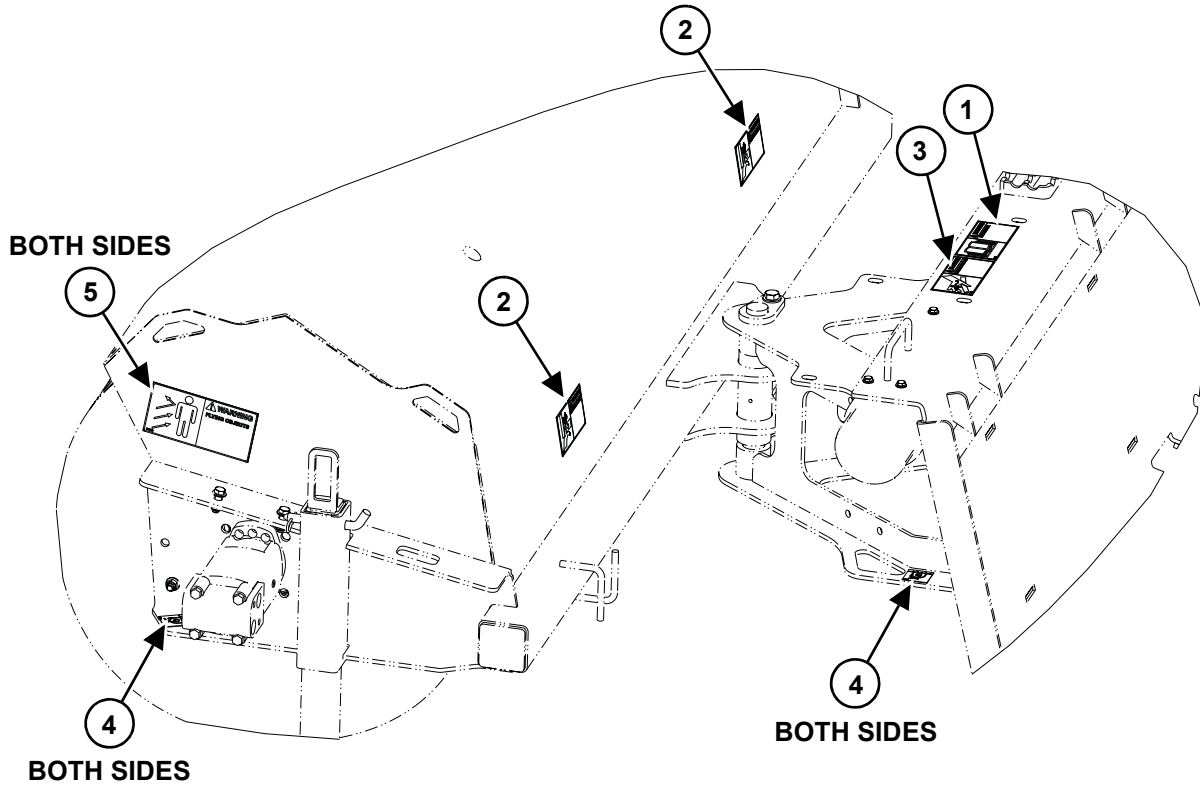


8 7 6 5 4 3 2 1

| ITEM NO. | PART NUMBER | DESCRIPTION | QTY - 60" | QTY - 72" | QTY - 84" | QTY - 96" |
|----------|--|--|-----------|-----------|-----------|-----------|
| 1 | 216265-60 216265-72 216265-84 216265-96 | MAIN FRAME WELDMENT - BROOM SUPPORT | 1 | 1 | 1 | 1 |
| 2 | 262260-60 262260-72 262260-84 262260-96 | DEBRIS DEFLECTOR (OPTIONAL) | 1 | 1 | 1 | 1 |
| 3 | 216752 | SUPPORT LEG | 2 | 2 | 2 | 2 |
| 4 | 216573 | HITCH PIN 1/2 X 3 - LEGS | 2 | 2 | 2 | 2 |
| 5 | 216743 | HD ANGLE BROOM PIVOT CONNECTION | 1 | 1 | 1 | 1 |
| 6 | 216721 | PIN - BOLT ON - 11 1/4" | 1 | 1 | 1 | 1 |
| 7 | 216722 | PIN - BOLT ON - 6 1/4" | 2 | 2 | 2 | 2 |
| 8 | 216745 | MOUNT PLATE | 1 | 1 | 1 | 1 |
| 9 | 216402 | STORAGE TUBE FOR MANUAL | 1 | 1 | 1 | 1 |
| 10 | 216158 | CYLINDER - HYDRAULIC ONLY | 1 | 1 | 1 | 1 |
| 11 | 216784 | PIVOT ARM - MANUAL ONLY | 1 | 1 | 1 | 1 |
| 12 | 216238 | DIVERTER VALVE MOUNT BRACKET - HYDRAULIC ONLY | 1 | 1 | 1 | 1 |
| 13 | 216702 | BROOM - SD - SERIES 2 DIVERTER VALVE ASSY - HYDRAULIC ONLY | 1 | 1 | 1 | 1 |
| 14 | 216786 | BULKHEAD MOUNT PLATE - MANUAL ONLY | 1 | 1 | 1 | 1 |
| 15 | 216770-60 216770-72 216770-84 216770-96 | HD DRUM SHAFT | 1 | 1 | 1 | 1 |
| 16 | 216782 | HD END PLATE - DRUM SHAFT | 2 | 2 | 2 | 2 |
| 17 | 216156 | BEARING HOUSING | 1 | 1 | 1 | 1 |
| 18 | 216788 | HD MOTOR GUARD | 1 | 1 | 1 | 1 |
| 19 | 216705 | ANGLE BROOM MOTOR - SERIES 2 - SPLINE DRIVE - 315CC | 1 | 1 | 1 | 1 |
| 20 | 216410 216415 216417 | 26" X 8" CONVOLUTED WAFER - STEEL (OPTIONAL) 26" X 8" CONVOLUTED WAFER - POLY (OPTIONAL) 26" X 8" CONVOLUTED WAFER - POLY / STEEL (STANDARD) | 31 | 37 | 43 | 49 |
| 21 | 299418 | BOLT - GRADE 8 - HEX HEAD - 1/4"-20 X 1-1/2" | | | | |
| 22 | 299715 | FLAT WASHER - GRADE 8 - 1/4" | | | | |
| 23 | 299615 | NYLOCK NUT - GRADE 8 - 1/4"-20 | | | | |
| 24 | 299426 | BOLT - GRADE 8 - HEX HEAD - 3/8"-16 X 1 1/4" | | | | |
| 25 | 299428 | BOLT - GRADE 8 - HEX HEAD - 3/8"-16 X 1-1/2" | | | | |
| 26 | 299725 | FLAT WASHER - GRADE 8 - 3/8" | | | | |
| 27 | 299625 | NYLOCK NUT - GRADE 8 - 3/8"-16 | | | | |
| 28 | 299439 | BOLT - GRADE 8 - HEX HEAD - 1/2"-13 X 1 3/4" | | | | |
| 29 | 299433 | BOLT - GRADE 8 - HEX HEAD - 1/2"-13 X 2" | | | | |
| 30 | 299730 | FLAT WASHER - GRADE 8 - 1/2" | | | | |
| 31 | 299618 | NYLOCK NUT - GRADE 8 - 1/2"-13 | | | | |
| 32 | 299460 | BOLT - GRADE 8 - HEX HEAD - 7/8"-9 X 2-1/2" | | | | |
| 33 | 299629 | NYLOCK NUT - GRADE 8 - 7/8"-9 | | | | |

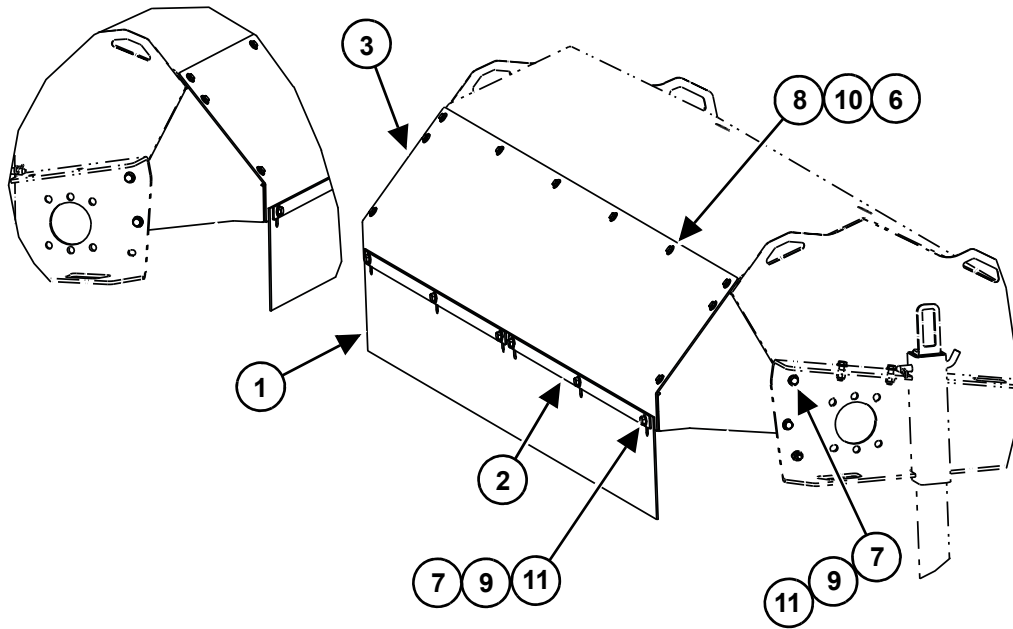
8 7 6 5 4 3 2 1

Decal Identification And Location



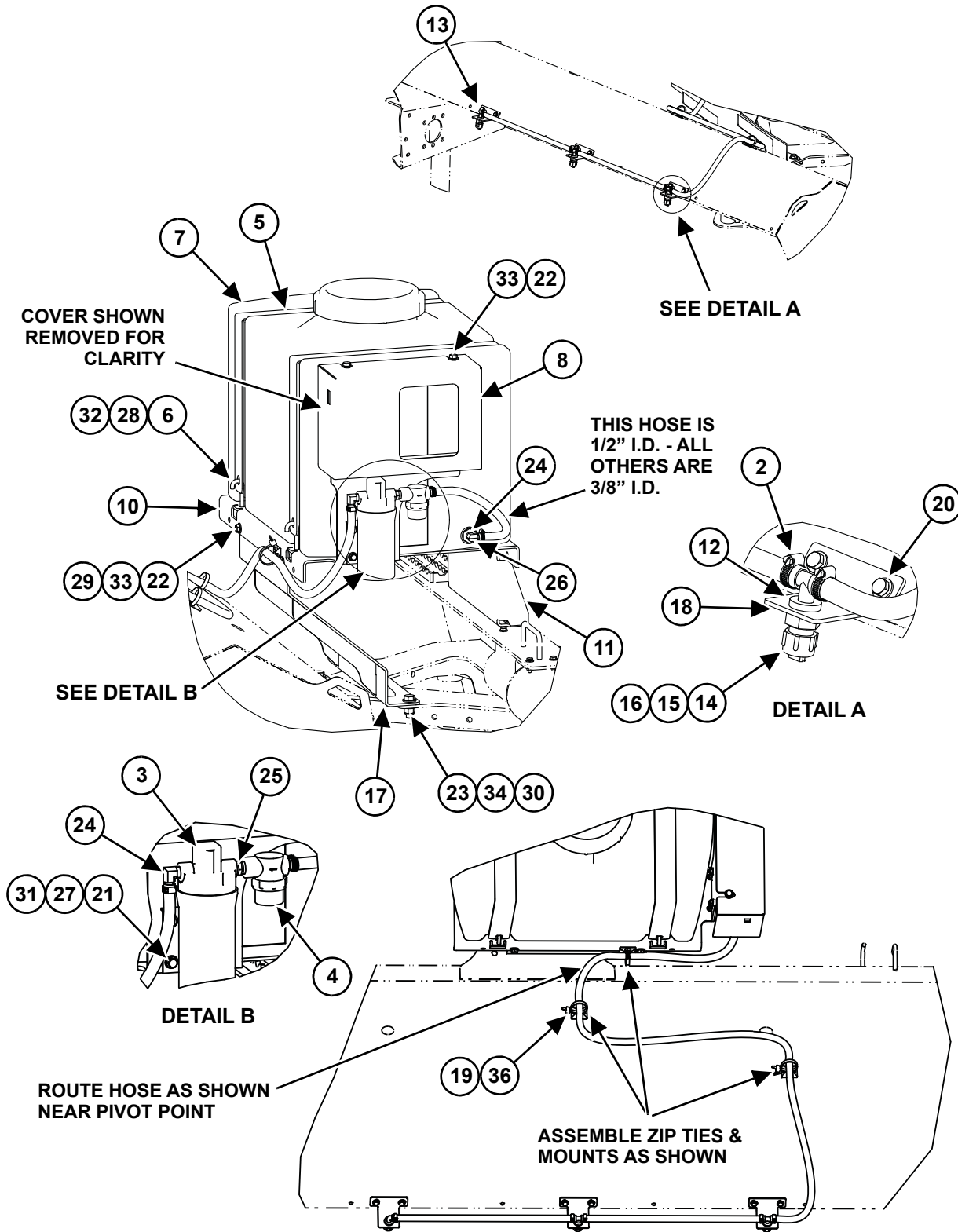
| ITEM | DESCRIPTION | PART # | QTY |
|------|-----------------------------|--------|-----|
| 1 | DECAL, READ MANUAL | D0164 | 1 |
| 2 | DECAL, CRUSHING HAZARD | D0165 | 2 |
| 3 | DECAL, INJECTION HAZARD | D0167 | 1 |
| 4 | DECAL, TIE DOWN | D0169 | 4 |
| 5 | DECAL, LARGE FLYING OBJECTS | D0323 | 2 |

Front Cover (Optional)



| ITEM | DESCRIPTION | PART # | QTY |
|------|--|-----------|-----|
| 1 | SHROUD, RUBBER DUST FRONT (60") | 216453 | 1 |
| | SHROUD, RUBBER DUST FRONT (72") | 216455 | 1 |
| | SHROUD, RUBBER DUST FRONT (84") | 216457 | 1 |
| 2 | PLATE, DUST COVER FRONT RETAINER (60") | 216452 | 2 |
| | PLATE, DUST COVER FRONT RETAINER (72") | 216454 | 2 |
| | PLATE, DUST COVER FRONT RETAINER (84") | 216456 | 2 |
| 3 | PLATE, BROOM FRONT COVER (60") | 21626-60 | 1 |
| | PLATE, BROOM FRONT COVER (72") | 216262-72 | 1 |
| | PLATE, BROOM FRONT COVER (84") | 216262-84 | 1 |
| | | | |
| | | | |
| 6 | BOLT, 1/4-20 X 0.75 PLATED | 299413 | 10 |
| 7 | BOLT, 3/8-16 X 1.00 PLATED | 299423 | 10 |
| 8 | NUT, 1/4-20 PLATED NYLOCK | 299615 | 10 |
| 9 | NUT, 3/8-16 PLATED NYLOCK | 299625 | 10 |
| 10 | WASHER, 1/4 WIDE PLATED | 299715 | 20 |
| 11 | WASHER, 3/8 NARROW PLATED | 299725 | 20 |

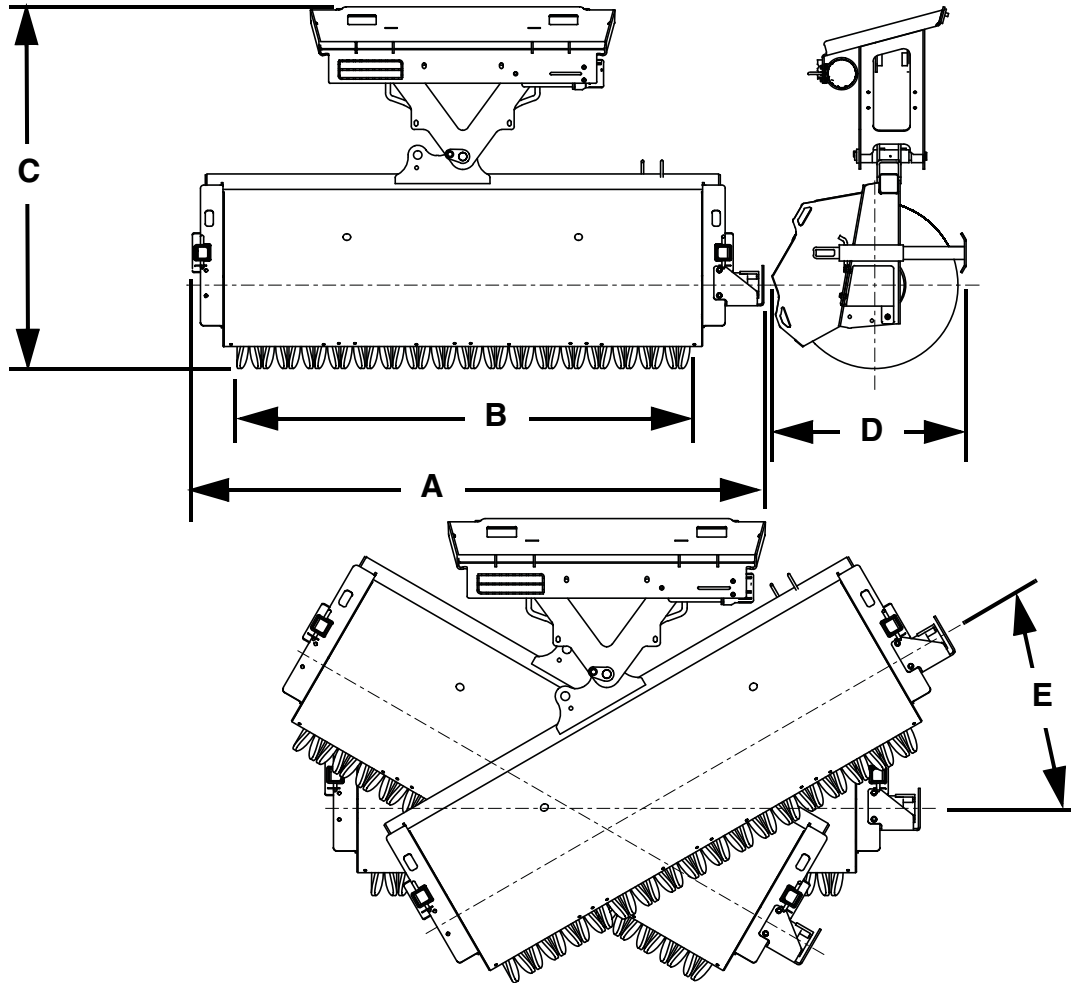
Water Spray Kit (Optional)



| ITEM | DESCRIPTION | PART # | QTY |
|------|--|----------|------|
| 1 | TUBE, VINYL 1/2" ID (QTY IN INCHES) | 216688 | 18" |
| 2 | CLAMP, HOSE | 216691 | 8 |
| 3 | PUMP ASSEMBLY, WATER KIT | 216540 | 1 |
| 4 | STRAINER, WATER KIT | 216542 | 1 |
| 5 | STRAP, WATER TANK | 255422 | 2 |
| 6 | BOLT, J 5/16X2 | 216548 | 4 |
| 7 | TANK ASSEMBLY, 25 GAL | 216424 | 1 |
| 8 | PLATE, WATER PUMP COVER | | 1 |
| 9 | HARNESS, MOTOR CONTROL (NOT SHOWN) | 200010 | 1 |
| 10 | WELDMENT, AB WK CRADLE | 216365 | 1 |
| 11 | PLATE, AB WK SUPPORT | 216360 | 1 |
| 12 | NOZZLE, TEE 3/8 BARB | 216310 | 2 |
| 13 | NOZZLE, ELBOW 3/8 BARB | 216315 | 1 |
| 14 | NOZZLE CAP | 216693 | 3 |
| 15 | STRAINER, 50 MESH | 216320 | 3 |
| 16 | NOZZLE, 80 DEG. 0.03 ORF | 216305 | 3 |
| 17 | WELDMENT, AB WK SUPPORT | 116151 | 1 |
| 18 | PLATE, NOZZLE HOLDER | 216325 | 3 |
| 19 | MOUNT, ADHESIVE ZIP TIE | n/a | 3 |
| 20 | BOLT, 1/4-20 X 1.00 PLATED | 299418-1 | 6 |
| 21 | BOLT, 1/4-20 X 1.50 PLATED | 299418 | 4 |
| 22 | BOLT, 3/8-16 X 1.25 PLATED | 299426 | 6 |
| 23 | BOLT, 1/2-13 X 1.50 PLATED | 299432 | 4 |
| 24 | FITTING, 1/2 PIPE-M X 1/2 BARB-M ELBOW | 216556 | 2 |
| 25 | FITTING, ADAPTER 1/2 PIPE-M X 3/8 PIPE-M | 216660 | 1 |
| 26 | FITTING, REDUCER 3/4 PIPE-M X 1/2 PIPE-F | n/a | 1 |
| 27 | NUT, 1/4-20 PLATED NYLOCK | 299615 | 10 |
| 28 | NUT, 5/16-18 PLATED NYLOCK | 299620 | 4 |
| 29 | NUT, 3/8-16 PLATED NYLOCK | 299625 | 4 |
| 30 | NUT, 1/2-20 PLATED NYLOCK | 299618 | 4 |
| 31 | WASHER, 1/4 NARROW PLATED | 299715 | 20 |
| 32 | WASHER, 5/16 NARROW PLATED | 299720 | 4 |
| 33 | WASHER, 3/8 NARROW PLATED | 299725 | 10 |
| 34 | WASHER, 1/2 NARROW PLATED | 299730 | 8 |
| 35 | TUBE, VINYL 3/8" ID (QTY IN INCHES) | 216690 | 136" |
| 36 | CABLE TIE, ZIP 1/4 X 7 | n/a | 3 |

Attachment Specifications

Dimensions



| DESCRIPTION | ANGLE BROOM HEAVY DUTY | | |
|--------------------------------|------------------------|--------------------|---------------------|
| | 60" | 72" | 84" |
| Overall Width (A) | 76.8 in. (1951 mm) | 88.8 in. (2256 mm) | 100.8 in. (2560 mm) |
| Brooming Width (B) | 60 in. (1524 mm) | 72 in. (1829 mm) | 84 in. (2134 mm) |
| Overall Depth (C) | 56.2 in. (1428 mm) | 56.2 in. (1428 mm) | 56.2 in. (1428 mm) |
| Overall Height (D) | 30.2 in. (767 mm) | 30.2 in. (767 mm) | 30.2 in. (767 mm) |
| Pivot Angle - Left & Right (E) | 30° | 30° | 30° |
| Weight | 760 lbs. (345 kg) | 825 lbs. (374 kg) | 905 lbs. (411 kg) |

Performance

| DESCRIPTION | ANGLE BROOM HEAVY DUTY | | |
|-----------------------------------|------------------------|----------------------|----------------------|
| | 60" | 72" | 84" |
| Minimum Flow | 15 GPM (56.8 L/min) | 15 GPM (56.8 L/min) | 15 GPM (56.8 L/min) |
| Maximum Flow | 25 GPM (94.6 L/min) | 25 GPM (94.6 L/min) | 25 GPM (94.6 L/min) |
| Minimum Pressure | 2000 PSI (137.9 bar) | 2000 PSI (137.9 bar) | 2000 PSI (137.9 bar) |
| Maximum Pressure | 3500 PSI (241.3 bar) | 3500 PSI (241.3 bar) | 3500 PSI (241.3 bar) |
| Wafer Diameter (OD) | 26 in. (660 mm) | 26 in. (660 mm) | 26 in. (660 mm) |
| Optional Water Kit Weight (Empty) | 89 lbs. (40 kg) | 89 lbs. (40 kg) | 89 lbs. (40 kg) |
| Optional Water Kit Capacity | 25 Gal (95 L) | 25 Gal (95 L) | 25 Gal (95 L) |
| Optional Front Cover Weight | 43 lbs. (20 kg) | 43 lbs. (20 kg) | 43 lbs. (20 kg) |

Torque Specifications

Standard Hardware And Lock Nuts

| BOLT TYPE | SAE GRADE 5 | | SAE GRADE 8 | | LOCK NUTS | | | |
|-----------|--------------------------|------------------------------|--------------------------|------------------------------|---------------------------|------------------------------|--------------------------|--------------------------|
| | Nominal Size | Plated or Unplated Silver | Plated W / ZnCr Gold | Plated or Unplated Silver | Plated W / ZnCr Gold | Plated or Unplated Silver | Plated W / ZnCr Gold | W / Grade 5 Bolt |
| 1/4 | 55 in / lb (6.2 N•m) | 72 in / lb (8.1 N•m) | 86 in / lb (9.7 N•m) | 112 in / lb (12.6 N•m) | 121 in / lb (13.6 N•m) | 157 in / lb (17.7 N•m) | 61 in / lb (6.9 N•m) | 86 in / lb (9.8 N•m) |
| 5/16 | 115 in / lb (13 N•m) | 149 in / lb (17 N•m) | 178 in / lb (20 N•m) | 229 in / lb (26 N•m) | 250 in / lb (28 N•m) | 325 in / lb (37 N•m) | 125 in / lb (14 N•m) | 176 in / lb (20 N•m) |
| 3/8 | 17 ft / lb (23 N•m) | 22 ft / lb (30 N•m) | 26 ft / lb (35 N•m) | 34 ft / lb (46 N•m) | 37 ft / lb (50 N•m) | 48 ft / lb (65 N•m) | 19 ft / lb (26 N•m) | 26 ft / lb (35 N•m) |
| 7/16 | 27 ft / lb (37 N•m) | 35 ft / lb (47 N•m) | 42 ft / lb (57 N•m) | 54 ft / lb (73 N•m) | 59 ft / lb (80 N•m) | 77 ft / lb (104 N•m) | 30 ft / lb (41 N•m) | 42 ft / lb (57 N•m) |
| 1/2 | 42 ft / lb (57 N•m) | 54 ft / lb (73 N•m) | 64 ft / lb (87 N•m) | 83 ft / lb (113 N•m) | 91 ft / lb (123 N•m) | 117 ft / lb (159 N•m) | 45 ft / lb (61 N•m) | 64 ft / lb (88 N•m) |
| 9/16 | 60 ft / lb (81 N•m) | 77 ft / lb (104 N•m) | 92 ft / lb (125 N•m) | 120 ft / lb (163 N•m) | 130 ft / lb (176 N•m) | 169 ft / lb (229 N•m) | 65 ft / lb (88 N•m) | 92 ft / lb (125 N•m) |
| 5/8 | 83 ft / lb (112 N•m) | 107 ft / lb (145 N•m) | 128 ft / lb (174 N•m) | 165 ft / lb (224 N•m) | 180 ft / lb (244 N•m) | 233 ft / lb (316 N•m) | 90 ft / lb (122 N•m) | 127 ft / lb (172 N•m) |
| 3/4 | 146 ft / lb (198 N•m) | 189 ft / lb (256 N•m) | 226 ft / lb (306 N•m) | 293 ft / lb (397 N•m) | 319 ft / lb (432 N•m) | 413 ft / lb (560 N•m) | 160 ft / lb (217 N•m) | 226 ft / lb (306 N•m) |
| 7/8 | 142 ft / lb (193 N•m) | 183 ft / lb (248 N•m) | 365 ft / lb (495 N•m) | 473 ft / lb (641 N•m) | 515 ft / lb (698 N•m) | 667 ft / lb (904 N•m) | 258 ft / lb (350 N•m) | 364 ft / lb (494 N•m) |
| 1 | 213 ft / lb (289 N•m) | 275 ft / lb (373 N•m) | 547 ft / lb (742 N•m) | 708 ft / lb (960 N•m) | 773 ft / lb (1048 N•m) | 1000 ft / lb (1356 N•m) | 386 ft / lb (523 N•m) | 545 ft / lb (739 N•m) |



HEAVY DUTY ANGLE BROOM

Limited Warranty

MANUFACTURER'S LIMITED WARRANTY

BLUE DIAMOND ATTACHMENTS, a manufacturer of quality attachments, warrants new BLUE DIAMOND ATTACHMENTS products and/or attachments at the time of delivery to the original purchaser, to be free from defects in material and workmanship when properly set up and operated in accordance with the recommendations set forth by BLUE DIAMOND ATTACHMENTS, LLC.

BLUE DIAMOND ATTACHMENTS liability for any defect with respect to accepted goods shall be limited to repairing the goods at a BLUE DIAMOND ATTACHMENTS designated location or at an authorized dealer location, or replacing them, as BLUE DIAMOND ATTACHMENTS shall elect. The above shall be in accordance with BLUE DIAMOND ATTACHMENTS warranty adjustment policies. BLUE DIAMOND ATTACHMENTS obligation shall terminate twelve (12) months for the heavy duty angle broom series 2 after the delivery of the goods to original purchaser.

This warranty shall not apply to any machine or attachment which shall have been repaired or altered outside the BLUE DIAMOND ATTACHMENTS factory or authorized BLUE DIAMOND ATTACHMENTS dealership or in any way so as in BLUE DIAMOND ATTACHMENTS judgment, to affect its stability or reliability, nor which has been subject to misuse, negligence or accident beyond the Company recommended machine rated capacity.

WARRANTY CLAIM

To submit a warranty claim, a return authorization from BLUE DIAMOND ATTACHMENTS must be obtained. The failed part may then be returned. Tampering with the failed part may void the warranty. This warranty does not include freight or delivery charges incurred when returning machinery for servicing. Dealer mileage, service calls, and pickup/delivery charges are the customers' responsibility.

EXCLUSIONS OF WARRANTY

Except as otherwise expressly stated herein, BLUE DIAMOND ATTACHMENTS makes no representation or warranty of any kind, expressed or implied, AND MAKES NO WARRANTY OF MERCHANTABILITY IN RESPECT TO ITS MACHINERY AND/OR ATTACHMENTS ARE FIT FOR ANY PARTICULAR PURPOSE. BLUE DIAMOND ATTACHMENTS shall not be liable for incidental or consequential damages for any breach or warranty, including but not limited to inconvenience, rental of replacement equipment, loss of profits or other commercial loss. Upon purchase, the buyer assumes all liability for all personal injury and property resulting from the handling, possession, or use of the goods by the buyer.

No agent, employee, or representative of BLUE DIAMOND ATTACHMENTS has any authority to bind BLUE DIAMOND ATTACHMENTS to any affirmation, representation, or warranty concerning its machinery and/or attachments except as specifically set forth herein.

This warranty policy supersedes any previous documents.

NOTE: Blue Diamond Attachments is a trademark of BLUE DIAMOND ATTACHMENTS

QUALITY | DEPENDABILITY | INTEGRITY



QUALITY | DEPENDABILITY | INTEGRITY

Blue Diamond Attachments™
4512 Anderson Road, Knoxville, TN 37918
Tel: 1-888-376-7027 / Fax: 865-246-2007