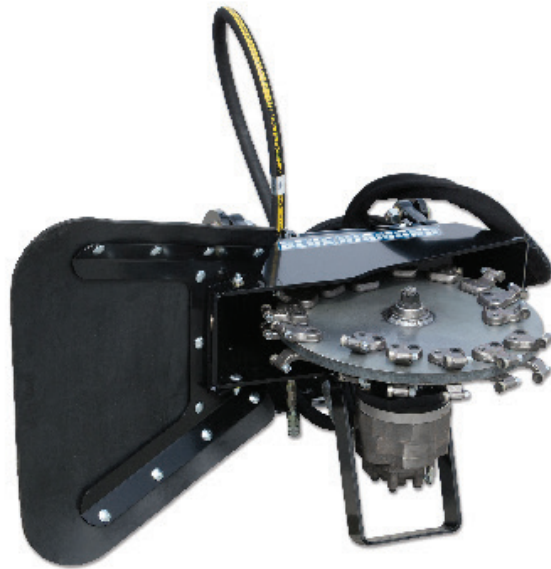


# Extreme Duty Stump Grinder

Operation and Maintenance Manual



Register your  
**WARRANTY**  
within 30 days  
of purchase



888-376-7027 | [BlueDiamondAttachments.com](http://BlueDiamondAttachments.com)



BD-092

# Introduction: Owner Information

Thank you for your decision to purchase a Blue Diamond® Extreme Duty Stump Grinder. To ensure maximum performance of your equipment, it is mandatory that you thoroughly study the Operator's manual and follow the recommendations. Proper operation and maintenance are essential to maximize equipment life and prevent personal injury.

Operate and maintain this equipment in a safe manner and in accordance with all applicable local, state, and federal codes, regulations and /or laws. Follow all on-product labeling and instructions.

Make sure that all personnel have read this Operator's Manual and thoroughly understand safe and correct operating, installation and maintenance procedures.

Blue Diamond is continually working to improve its products. Blue Diamond reserves the right to make any improvements or changes as deemed practical and possible without incurring any responsibility or obligation to make any changes or additions to equipment sold previously.

Although great care has been taken to ensure the accuracy of this publication, Blue Diamond makes no warranty or guarantee of any kind, written or expressed, implied or otherwise with regard to the information contained within this manual. Blue Diamond assumes no responsibility for any errors that may appear in this manual and shall not be liable under any circumstances for incidental, consequential or punitive damages in connection with, or arising from the use of this manual.

Keep this manual available for frequent reference. All new operators or owners must review the manual before using the equipment and annually thereafter. Contact your Blue Diamond Attachments Dealer for assistance, information, or additional copies of the manual. Contact [www.bluediamondattachments.com](http://www.bluediamondattachments.com) or call 888-376-7027 for a complete list of dealers in your area.

## Serial Number Location:

Please record attachment information in the space provided for future reference.



Model Number: \_\_\_\_\_

Serial Number: \_\_\_\_\_

Dealer Name: \_\_\_\_\_

Dealer Number: \_\_\_\_\_

Date of Purchase: \_\_\_\_\_

The serial number plate is located on the right side of the attachment at the top of the mounting plate.

Always use your serial number when requesting information or when ordering parts.

**NOTE:** The directions left, right, front and rear, as mentioned throughout this manual, are as viewed from the operator's position.

Revision Date: 01.16.2022

Blue Diamond® Attachments

# Table of Contents

---

1. About this Manual .....	4
1.1 Hazard Notices used in this manual .....	4
1.2 Terminology .....	4
2. Safety .....	5
2.1 Safety Notices.....	5
2.2 Modifications to Equipment.....	5
3. About the Stump Grinder Attachment .....	6
3.1 Grinders.....	6
3.2 Attaching the Stump Grinder from the Prime Mover .....	6
3.3 Removing the Stump Grinder from the Prime Mover.....	7
4. Stump Grinder Operation .....	8-9
4.1 How to Grind Stumps .....	8
5. Inspection.....	10
5.1 Equipment Inspection .....	10
5.2 Inspection Checklist.....	10
5.3 Usage Guidelines.....	10
6. Maintenance .....	11
7. Diagrams & Assembly .....	12-19
7.1 Deck Assembly — 24” .....	12
7.2 Deck Assembly — 26” .....	15
7.3 Cutting Wheel — 24” .....	18
7.4 Cutting Wheel — 26” .....	19
8. Appendix .....	20
8.1 O-Ring (AS568) Boss Fittings: SAE Sizes .....	20
8.2 O-Ring (AS568) Flat Seal Fittings: SAE & Metric Sizes .....	20
9. Warranty .....	21

# 1. About this Manual

---

## About this Manual

Read this manual and follow safety instructions before operating the Stump Grinder. Learn to operate the stump grinder and its controls properly. Never let anyone operate without instruction. This manual contains information about the usage and maintenance required for the equipment. This document must be available for review by the operator before using the attachment to ensure proper safety, maintenance, and usage.

## 1.1 Hazard Notices Used in this Manual

The following hazard notices are used in this document:

**NOTE:** Notes are used to indicate important information. This information may be repeated in other areas of the manual.

## 1.2 Terminology

**Prime Mover:** The Blue Diamond® Extreme Duty Stump Grinder can be attached to many different pieces of equipment; therefore, the term “prime mover” will be used. A prime mover is any loader, tractor, or equipment providing power to the attachment.



### CAUTION



The signal word **CAUTION** on the machine and in the manuals indicates a potentially hazardous situation which, if not avoided, may result in minor or moderate injury. It may also be used to alert against unsafe practices.



### WARNING



The signal word **WARNING** on the machine and in the manuals indicates a potentially hazardous situation which, if not avoided, could result in death or serious injury.



### DANGER



The signal word **DANGER** on the machine and in the manuals indicates a hazardous situation which, if not avoided, will result in death or serious injury.

## 2. Safety

---

### 2.1 Safety Notices

Before operating or conducting maintenance on this equipment, it is important to wear proper protection. Recommended safety equipment when operating and maintaining this equipment include close fitting clothing, earplugs, eye protection, and a hard hat. Additional safety equipment may be required depending on the operating environment and worksite conditions.

Only qualified and trained personnel should operate, maintain, and service this attachment. It is recommended that this equipment be inspected regularly for leaks, cracks, or other conditions that may impair proper usage of the equipment. Verify that all repairs have been completed and inspected prior to using the attachment under load.

It is the responsibility of the user to follow all local, state, and federal safety regulations. Improper use of this equipment may result in personal injury, property damage, and/or damage to the equipment.

### 2.2 Modifications to Equipment

Any modifications made to this equipment may void any warranty and relieve the manufacturer of liability of any resulting injury or damage.



#### **DANGER**



**AVOID** high pressure fluids. Escaping fluid under pressure can penetrate the skin and cause serious injury. Relieve pressure **BEFORE** disconnecting hydraulic lines. Tighten all connections before applying pressure. **IF AN ACCIDENT OCCURS, SEE A DOCTOR IMMEDIATELY.** Any fluids injected into the skin must be surgically removed within a few hours or gangrene may result.



#### **WARNING**



Do not operate the Stump Grinder if any of the safety guards are not in place.

## 3. About the Stump Grinder Attachment

The Extreme Duty Stump Grinder attachment is intended for use in stump grinding. Use of this equipment in any other manner is considered to be contrary to the intended use of the attachment.

### 3.1 Grinders

Blue Diamond® Stump Grinder attachments are a necessity for tree companies, landscapers, agricultural producers and rental companies looking to increase their productivity and efficiency when stump grinding.

The Blue Diamond® Extreme Duty Stump Grinder is designed by people with years of experience with attachments for machinery. You can be sure that the quality of the stump grinder is our first priority.

The stump grinder has been designed to deliver the productivity of a dedicated machine, but it costs four to five times less. The Blue Diamond® Extreme Duty Stump Grinder is the only stump grinder in the industry with a cushioned parallelogram mechanism for drivetrain protection and dual- direction cutting. A radial piston motor for maximum productivity and proven Greenteeth® technology are just a few features that combine to bring you the world's finest stump grinder!



### 3.2 Attaching the Stump Grinder to the Prime Mover

**NOTE:** Before attempting to attach the stump grinder to the prime mover, verify that all hydraulic couplers are compatible.



#### CAUTION



Hydraulics should operate in an even and smooth manner. Hydraulic movement that is not even and smooth may indicate that air is in the hydraulic lines.



#### WARNING



Improper attachment to the prime mover may cause personal injury.



#### CAUTION



All hydraulic connections must be clean and free of debris before making any connection.

1. Place the Stump Grinder on a level surface.
2. Position and align the prime mover to the rear of the attachment, within proximity of the front of the prime mover.
3. Insert and connect the prime mover into the attachment.
4. Connect the hydraulic lines from the attachment to the prime mover.
5. Close latches (or other locking mechanism) to secure the attachment to the prime mover.
6. Using the prime mover, raise the attachment and move the attachment to ensure hydraulic lines are clear of air and operate properly.
7. Lower the attachment to ground level.
8. Route hoses away from pinch areas — install cable ties if necessary to assure extended hose life.
9. Inspect that the attachment is mounted properly and securely. If the attachment does not meet this requirement, follow the instructions to remove the Stump Grinder and re-attach using the instructions above.

## 3. About the Stump Grinder Attachment

---

### 3.3 Removing the Stump Grinder from the Prime Mover



#### WARNING



Improper disconnection may result personal injury or damage to the attachment and prime mover.



#### CAUTION



All hydraulic connections must be clean and free of debris before disconnection.

**NOTE:** Hydraulic connections must be disconnected before disengaging latches to prevent damage to the prime mover or the attachment.

1. Using the prime mover, lower the attachment to the ground.
2. Relieve the pressure in the hydraulic system by following these instructions:
  - a. Turn the ignition to off.
  - b. Turn the ignition back to the on position without starting the machine.
  - c. Move the auxiliary hydraulic function lever back and forth to relieve the pressure in the hydraulic lines (this will greatly assist you when hooking the unit back up so that the hydraulic couplers connect easily).
3. Disconnect the hydraulic connection between the attachment and the prime mover. To prevent contamination, remove any dirt and debris from the couplers.
4. Disengage the prime mover latches (or other locking mechanism) from the Stump Grinder.
5. Remove the prime mover from the attachment.

## 4. Stump Grinder Operation

**NOTE:** Replace any damaged hardware, hoses, and fittings before using the equipment.



### WARNING



Do not use hands to check for hydraulic leaks. Keep body parts away from the leaking hydraulic lines and couplers that are under pressure.



### DANGER



Keep all body parts away from the Stump Grinder when in use. The pivoting blade is dangerous and hazardous and could potentially cause serious bodily injury or death.



### CAUTION



Always be aware of what is overhead when operating the Stump Grinder.



**Eye and Ear Protection:** To help ensure your safety as a designated operator wear eye and ear protection.



**Safety Helmet:** To help ensure your safety as a designated operator wear a safety helmet.

### 4.1 How to Grind Stumps

Align the cutter wheel with the left side of the stump (viewed from the machine control area) and position the machine so that it will cut about 4-6 inches off the top of the stump and 8-12 inches from the left side of the stump. See FIGURE A.

The torsion mechanism prevents overloading of the carbide tipped cutting wheel, ensuring that grinding never stops. The rate of cut will depend on the type of tree, condition of the wood, and the condition of the cutters. Too light a feed will produce sawdust. The ideal feeding rate produces heavy wood chips, some of which may be about 1/16" thick by approximately 6-8 inches long, as well as chunks of wood. After completing the first cut through the stump, move the machine to the right (again as viewed from the control area) so the wheel can cut another 8-12 inches. Proceed with another cut. Additional passes, when the tree stump is very large, are made in the same manner as described above. Repeat the procedure until the stump is cut to ground level.

Before cutting below the ground level, make certain that all rock or stone is removed from the immediate area of the cutting wheel. When you are cutting below the ground level, the feed rate should be reduced and the operator should be alert to the possibility of cutting hidden rock. Extra care used in this part of the operation can avoid costly damage to the cutting wheel and teeth.

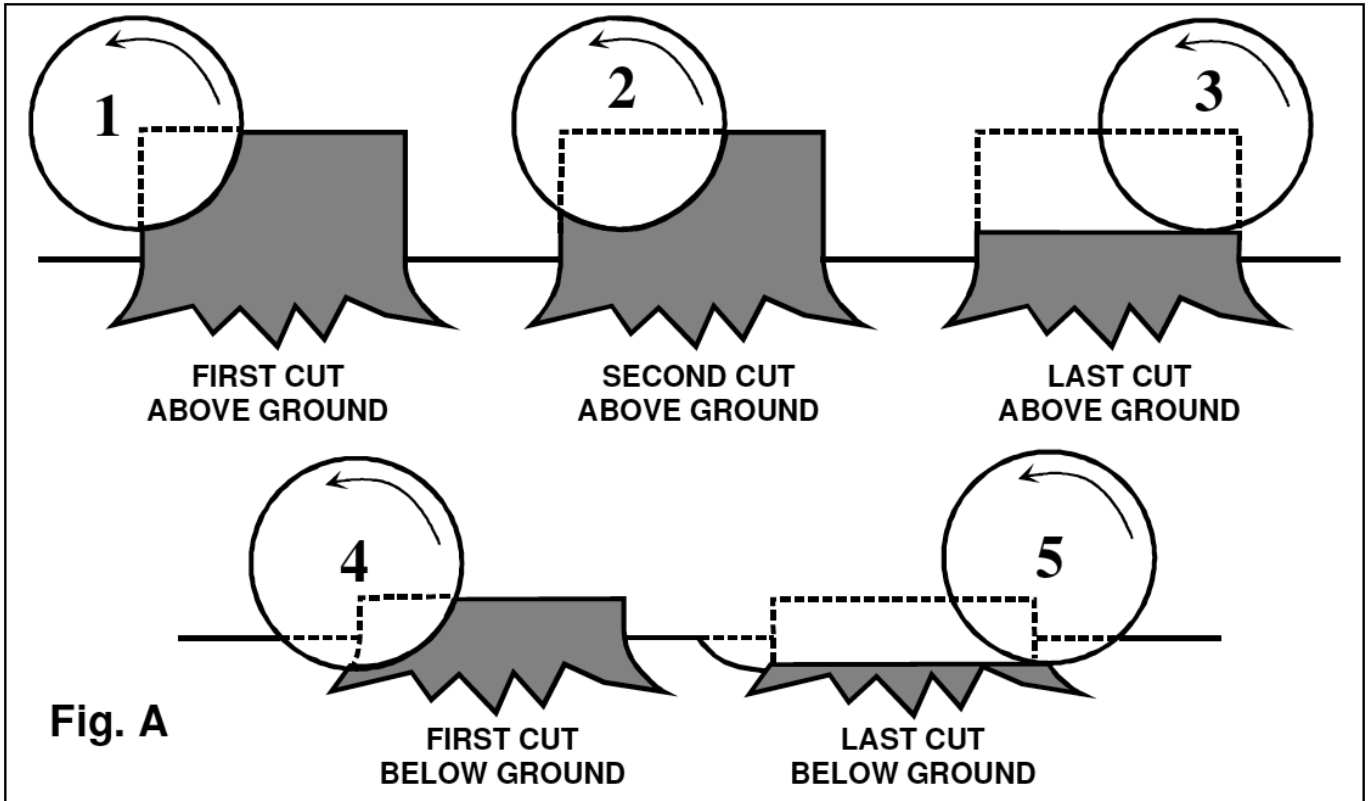
The wheel is designed so that it can "saw" or cut its way into solid wood by dropping straight down on it. This operation works well for cutting off large roots

**NOTE:** DO NOT operate the Stump Grinder with safety guards removed.



## 4. Stump Grinder Operation

### 4.1 How to Grind Stumps Con'td



## 5. Inspection

---

### 5.1 Equipment Inspection

It is recommended to inspect the equipment for damage and wear before use. Use the following list as a guideline during equipment inspection.

- Check all hardware connections to the prime mover for damage or fatigue such as cracks or other structural flaws.
- Check that all latches or locks are closed.
- Check that all hydraulic fittings are tight and free of leaks.
- Check that all hydraulic lines are free of leaks, holes, or cracks.
- Check that the tires on the prime mover are in good condition and have proper load ratings.

### 5.2 Inspection Checklist

- Are all safety notices and warning stickers in proper locations and visible?
- Are there any visible hydraulic leaks?
- Are any cracks visible in structure of the grinder?
- Is the cutting wheel bent?
- Are bolts holding teeth secure and tight?
- Has the prime mover been properly inspected for hydraulic leaks and proper tire inflation?
- Has the prime mover been properly maintained?

### 5.3 Usage Guidelines

Before each use of the Stump Grinder, do the following?

- Perform the equipment inspection by performing a walk around.
- Perform daily inspection as indicated on the Inspection Checklist.
- Verify that the proper attachment is being used for the task.
- As with any power attachment, safety is critical. An enclosed cab prime mover with the operator wearing safety protection is required.
- Never operate the Stump Grinder with persons within 100 feet of range.
- Disengage Stump Grinder and shut off the engine before leaving the cabin of the prime mover.
- Keep all body parts away from the Stump Grinder when in use.
- Keep all body parts away from the Stump Grinder when in use.
- Use caution on slopes and uneven terrain.
- Never carry passengers.
- Never leave the machine running unattended.
- Never leave the Stump Grinder off the ground when out of the operator's seat.
- Never allow children or untrained personnel to operate the Stump Grinder.

## 6. Maintenance

---

**NOTE:** Disconnect the hydraulic connection between the attachment and the prime mover before performing any type of maintenance on the Stump Grinder.



### **Cutting Wheel**

Be certain to check carbide cutting teeth for wear. Standard teeth can be rotated 180° for a fresh cutting edge. Sharpen or replace teeth as necessary.

### **Hoses**

Check hoses occasionally for abrasion damage. This may save you from downtime. If in doubt, replace with genuine Blue Diamond Attachment parts.

### **Pivot Pins**

Pivot pins may be lubed with moly-type grease, same as what is used on your machine. Please check the cotter pins that retain all pivot/anchor pins after each use. If missing, replace! Severe damage could be caused by losing a pin.

### **Direct Drive System**

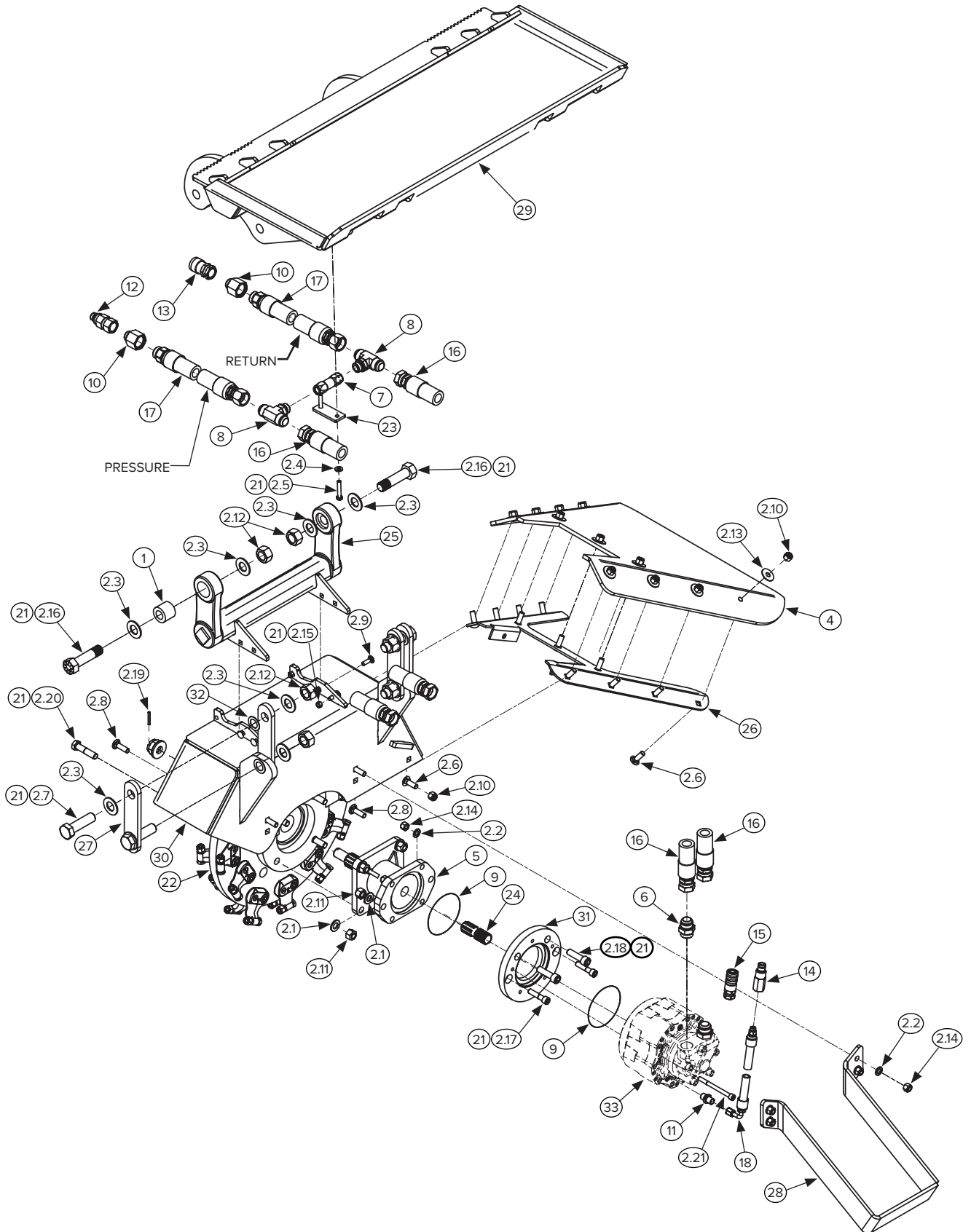
Check the direct drive system occasionally for seal damage and oil leaks. In the event of seal damage, replace the seal and the oil. To replace the oil, use 5 oz. of 90W gear oil. The oil can be added with just one plug out, but taking the second plug out allows it to vent and fill faster. Alternately, you can pour it in from the back with the motor off.

### **Storage**

Lubrication of pivot pins is recommended if unit is stored outside. Be certain hydraulic quick couplers are cleaned and joined together to keep dirt out. A light coating of oil film or diesel fluid is recommended to prevent corrosion. Touch-up paint should be used on all scratches to prevent further rust.

# 7. Diagrams & Assembly

## 7.1 Deck Assembly — 24"



## 7. Diagrams & Assembly

### 7.1 Deck Assembly – 24”

REF #	PART #	PARTS DESCRIPTION	REQ
1	204065	BUSHING, UHMW, INSIDE TORSION	2
2	204071	BOLT KIT - STUMP GRINDER	1
2.1	299844	5/8 X 1.312 THRU-HARDENED SAE FLAT WASHER, YELLOW ZINC	10
2.2	299732	1/2 X 1.062 GR 8 SAE FLAT WASHER, YELLOW ZINC	6
2.3	204766	1 X 2 GR 8 SAE FLAT WASHER, YELLOW ZINC	12
2.4	299724	3/8 X .812 GR 8 SAE FLAT WASHER, YELLOW ZINC	2
2.5	299328	3/8-16 X 2 GR 5 HEX CAP, ZINC	2
2.6	299336	1/2-13 X 1-1/2 GR 5 CARRIAGE BOLT, ZINC	13
2.7	204763	1-8 X 3-1/2 GR 8 HEX CAP, YELLOW ZINC	4
2.8	299335	1/2 X 1-3/4 NC CARRIAGE BOLT	4
2.9	299427	3/8-16 X 1-1/4 GR A ROUND HEAD CARRIAGE BOLT, ZINC	6
2.10	299618	1/2-13 GR 5 NYLOCK NUT, ZINC	13
2.11	109177	5/8"-11 GRADE C STEEL TOP LOCK	6
2.12	204772	1-8 GR 8 STOVER NUT, ZINC	6
2.13	299717	.50 X 1.50 FENDER WASHER, ZINC	11
2.14	204302	1/2-13 TOP LOCK NUT GR C, ZINC	6
2.15	208550	NUT, LOCK, .375, ZINC, GRADE C	6
2.16	299491	1-8 X 4 GR 8 HEX CAP, YELLOW ZINC	2
2.17	299453	5/8-11 X 2-1/4 ASTM A574 SOCKET CAP, BLACK OXIDE	2
2.18	299325	1/2-13 X 2-1/4 ASTM A574 SOCKET CAP, BLACK OXIDE	2
2.19	204061	M5 X 40MM SPRING PIN, PLAIN	1
2.20	299459	5/8-11 X 2-3/4 GR 8 HEX CAP, YELLOW ZINC	4
2.21	203419	M10-1.5 X 120MM SOCKET CAP SCREW, GR 12.9	5
3 (NS)	BD-KIT-104XXX	DECAL KIT, STUMP GRINDER (104110, 104120, & 104130)	1
4	204604	CHIP DEFLECTOR (RUBBER), HIGH	1
5	204220	BEARING HOUSING	1
6	295010-M16ORB-M16JIC	1MOR X 1MJIC, ADAPTER	2
7	204425	CHECK VALVE, MAIN	1
8	295050-M16JIC-M16JIC-M12ORB	1MJ X 1MJ X .75 MORB, TEE	2
9	204420	O-RING	2
10	298003	3/4" MORB X 1" FORB, FITTING	2
11	204416	6MJIC X 4BSPP ADAPTER TEMP	1
12	224012	1/2" MALE QUICK COUPLER X 3/4" SAE, FLAT FACE, NO SPILL	1
13	224011	1/2" FEMALE QUICK COUPLER X 3/4" SAE, FLAT FACE, NO SPILL	1
14	224064	3/8" MALE QUICK COUPLER, FLAT FACE, NO SPILL	1
15	224063	3/8" FEMALE QUICK COUPLER, FLAT FACE, NO SPILL	1
16	204087	HOSE 1 X 29 (1FJIC X 1FJIC)	2
17	204089	HOSE 1 X 85 (1FJIC X 1MORB) 4000 PSI	2
18	204400	HOSE .375 X 123 (.375FJIC-90DEG X .375MORB)	1
19	204081	14" ZIP TIE, WIDE	19

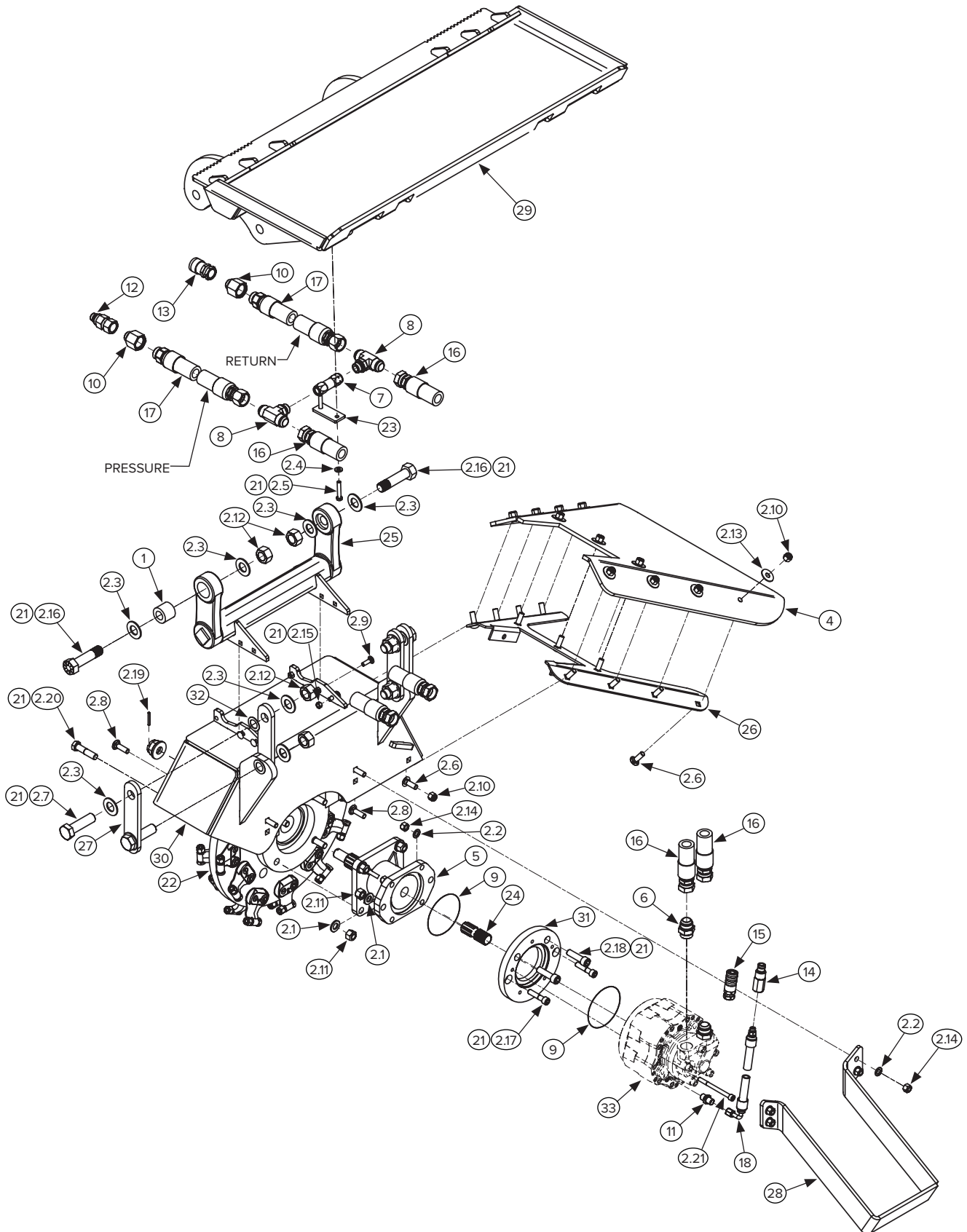
## 7. Diagrams & Assembly

### 7.1 Deck Assembly – 24”

REF #	PART #	PARTS DESCRIPTION	REQ
20	204127	KEVLAR SLEEVING 2 3/8 ID X 4.00 FLAT (SOLD/FT)	19
21	204082	LOCTITE 263, .017 OZ (RED)	1
22	204524	WHEEL ASSEMBLY - 24”	1
23	204780	HOSE HOLDER PLATE	1
24	204067	STUB SHAFT, A3 SPLINE, FOR HIGH PRESS HC05 MOTOR	1
25	204625	SPRING, TORSION, 2.530 SQ. X .171 WALL	1
26	204601	CHIP DEFLECTOR FRAME, HIGH FLOW	1
27	204760	LINKAGE - STUMP GRINDER	4
28	204305	MOTOR GUARD, FOUR BOLT MOUNT	1
29	204750	MOUNT BRACKET-SKID STEER	1
30	204079	WHEEL HOUSING	1
31	204069	ADAPTER - MOTOR	1
32	204769	WASHER, 1IN FIBER	8
33	204093	60cc Motor	1
	204077	75cc Motor	1
	204075	90cc Motor	1

# 7. Diagrams & Assembly

## 7.2 Deck Assembly – 26”



## 7. Diagrams & Assembly

### 7.2 Deck Assembly – 26”

REF #	PART #	PARTS DESCRIPTION	REQ
1	204065	BUSHING, UHMW, INSIDE TORSION	2
2	204071	BOLT KIT - STUMP GRINDER	1
2.1	299844	5/8 X 1.312 THRU-HARDENED SAE FLAT WASHER, YELLOW ZINC	10
2.2	299732	1/2 X 1.062 GR 8 SAE FLAT WASHER, YELLOW ZINC	6
2.3	204766	1 X 2 GR 8 SAE FLAT WASHER, YELLOW ZINC	12
2.4	299724	3/8 X .812 GR 8 SAE FLAT WASHER, YELLOW ZINC	2
2.5	299328	3/8-16 X 2 GR 5 HEX CAP, ZINC	2
2.6	299336	1/2-13 X 1-1/2 GR 5 CARRIAGE BOLT, ZINC	13
2.7	204763	1-8 X 3-1/2 GR 8 HEX CAP, YELLOW ZINC	4
2.8	299335	1/2 X 1-3/4 NC CARRIAGE BOLT	4
2.9	299427	3/8-16 X 1-1/4 GR A ROUND HEAD CARRIAGE BOLT, ZINC	6
2.10	299618	1/2-13 GR 5 NYLOCK NUT, ZINC	13
2.11	109177	5/8"-11 GRADE C STEEL TOP LOCK	6
2.12	204772	1-8 GR 8 STOVER NUT, ZINC	6
2.13	299717	.50 X 1.50 FENDER WASHER, ZINC	11
2.14	204302	1/2-13 TOP LOCK NUT GR C, ZINC	6
2.15	208550	NUT, LOCK, .375, ZINC, GRADE C	6
2.16	299491	1-8 X 4 GR 8 HEX CAP, YELLOW ZINC	2
2.17	299453	5/8-11 X 2-1/4 ASTM A574 SOCKET CAP, BLACK OXIDE	2
2.18	299325	1/2-13 X 2-1/4 ASTM A574 SOCKET CAP, BLACK OXIDE	2
2.19	204061	M5 X 40MM SPRING PIN, PLAIN	1
2.20	299459	5/8-11 X 2-3/4 GR 8 HEX CAP, YELLOW ZINC	4
2.21	203419	M10-1.5 X 120MM SOCKET CAP SCREW, GR 12.9	5
3 (NS)	BDKIT - 104XXX	DECAL KIT, STUMP GRINDER (104210, 104220, & 104230)	1
4	204604	CHIP DEFLECTOR (RUBBER), HIGH	1
5	204220	BEARING HOUSING	1
6	295010-M16ORB-M16JIC	1MOR X 1MJIC, ADAPTER	2
7	204425	CHECK VALVE, MAIN	1
8	295050-M16JIC-M16JIC-M12ORB	1MJ X 1MJ X .75 MORB, TEE	2
9	204420	O-RING	2
10	298003	3/4" MORB X 1" FORB, FITTING	2
11	204416	6MJIC X 4BSPP ADAPTER TEMP	1
12	224012	1/2" MALE QUICK COUPLER X 3/4" SAE, FLAT FACE, NO SPILL	1
13	224011	1/2" FEMALE QUICK COUPLER X 3/4" SAE, FLAT FACE, NO SPILL	1
14	224064	3/8" MALE QUICK COUPLER, FLAT FACE, NO SPILL	1
15	224063	3/8" FEMALE QUICK COUPLER, FLAT FACE, NO SPILL	1
16	204087	HOSE 1 X 29 (1FJIC X 1FJIC)	2
17	204089	HOSE 1 X 85 (1FJIC X 1MORB) 4000 PSI	2
18	204400	HOSE .375 X 123 (.375FJIC-90DEG X .375MORB)	1
19	204081	14" ZIP TIE, WIDE	19



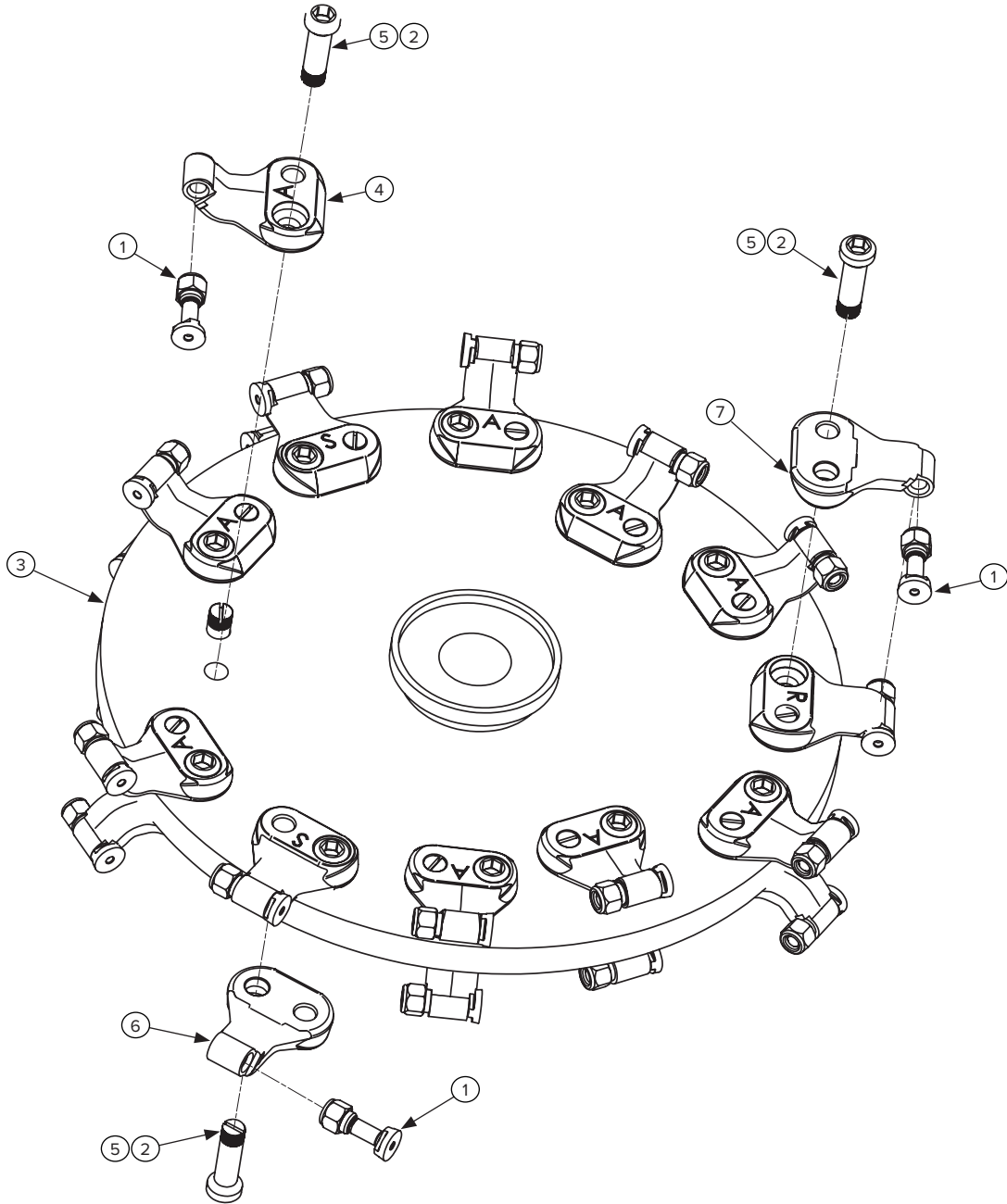
## 7. Diagrams & Assembly

### 7.2 Deck Assembly – 26”

REF #	PART #	PARTS DESCRIPTION	REQ
20	204127	KEVLAR SLEEVING 2 3/8 ID X 4.00 FLAT (SOLD/FT)	19
21	204082	LOCTITE 263, .017 OZ (RED)	1
22	204525	WHEEL ASSEMBLY - 26”	1
23	204780	HOSE HOLDER PLATE	1
24	204067	STUB SHAFT, A3 SPLINE, FOR HIGH PRESS HC05 MOTOR	1
25	204625	SPRING, TORSION, 2.530 SQ. X .171 WALL	1
26	204601	CHIP DEFLECTOR FRAME, HIGH FLOW	1
27	204760	LINKAGE - STUMP GRINDER	4
28	204305	MOTOR GUARD, FOUR BOLT MOUNT	1
29	204750	MOUNT BRACKET-SKID STEER	1
30	204079	WHEEL HOUSING	1
31	204069	ADAPTER - MOTOR	1
32	204769	WASHER, 1IN FIBER	8
33	204204	130cc Motor	1
	204097	150cc Motor	1
	204095	170cc Motor	1

## 7. Diagrams & Assembly

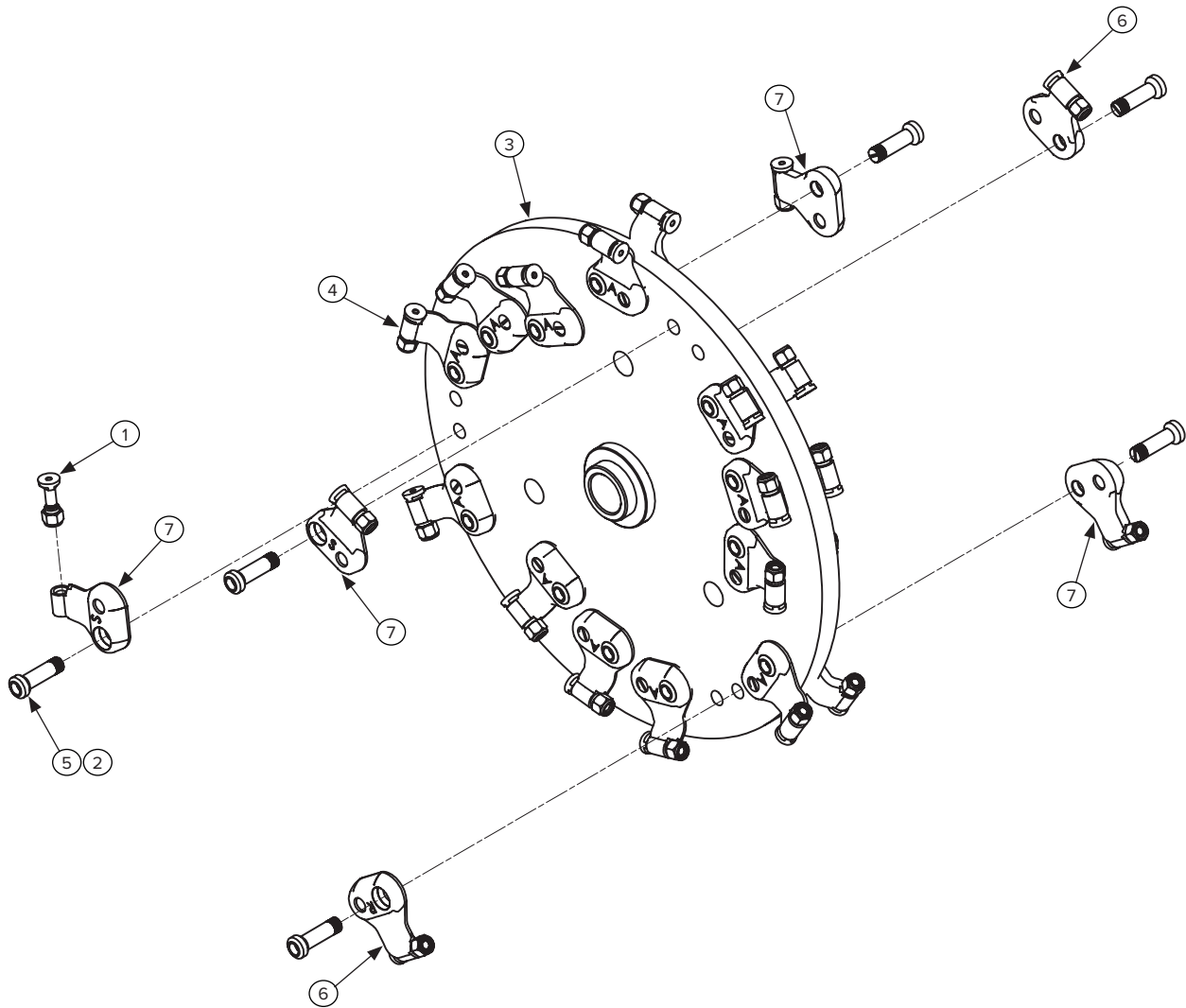
### 7.3 Cutting Wheel – 24”



REF #	PART #	PARTS DESCRIPTION	REQ	TORQUE (FT-LB)	TORQUE (NM)
1	204505	TOOTH, WEARSHARP	24	35	47
2	204063	LOCTITE 243 BLUE 5. ML	1		
3	204072	WHEEL - 24"	1		
4	204510	POCKET, ANGLE TOOTH, 18 ON LF 24 ON HF	18		
5	204508	POCKET, BOLT 24 ON LF, 30 ON HF	24	180	244
6	204512	POCKET, REVERSE TOOTH 2 ON LF & HF	2		
7	204514	POCKET, STRAIGHT TOOTH 4 ON LF & HF	4		

## 7. Diagrams & Assembly

### 7.4 Cutting Wheel – 26”



REF #	PART #	PARTS DESCRIPTION	REQ	TORQUE (FT-LB)	TORQUE (NM)
1	204505	TOOTH, WEARSHARP	30	35	47
2	204063	LOCTITE 243 BLUE 5. ML	1		
3	204073	WHEEL - 26"	1		
4	204510	POCKET, ANGLE TOOTH, 18 ON LF 24 ON HF	24		
5	204508	POCKET, BOLT 24 ON LF, 30 ON HF	30	180	244
6	204512	POCKET, REVERSE TOOTH 2 ON LF & HF	2		
7	204514	POCKET, STRAIGHT TOOTH 4 ON LF & HF	4		

## 8. Appendix

### 8.1 O-Ring (AS568) Boss Fittings: SAE Sizes

STANDARD O-RING PART #	HYDRAULIC SIZE	O-RING ID SAE (IN)	O-RING WIDTH SAE (IN)	O-RING MATERIAL
902	-2	0.24	0.06	90-durometer Nitrile
903	-3	0.30	0.06	90-durometer Nitrile
904	-4	0.35	0.07	90-durometer Nitrile
905	-5	0.41	0.07	90-durometer Nitrile
906	-6	0.47	0.08	90-durometer Nitrile
908	-8	0.64	0.09	90-durometer Nitrile
910	-10	0.76	0.1	90-durometer Nitrile
912	-12	0.92	0.12	90-durometer Nitrile
914	-14	1.05	0.12	90-durometer Nitrile
916	-16	1.17	0.12	90-durometer Nitrile
920	-20	1.48	0.12	90-durometer Nitrile
924	-24	1.72	0.12	90-durometer Nitrile
932	-32	2.34	0.12	90-durometer Nitrile

### 8.2 O-Ring (AS568) Flat Seal Fittings: SAE & Metric Sizes

STANDARD O-RING PART #	HYDRAULIC SIZE	END SIZE		O-RING ID		O-RING WIDTH		O-RING MATERIAL
		SAE (IN)	METRIC (MM)	SAE (IN)	METRIC (MM)	SAE (IN)	METRIC (MM)	
011	-4	1/4	6	0.30	7.70	0.07	1.78	90-durometer Nitrile
012	-6	3/8	8, 10	0.36	9.30	0.07	1.78	90-durometer Nitrile
014	-8	1/2	12	0.49	12.40	0.07	1.78	90-durometer Nitrile
016	-10	5/8	14, 15, 16	0.61	15.60	0.07	1.78	90-durometer Nitrile
018	-12	3/4	18, 20	0.74	18.80	0.07	1.78	90-durometer Nitrile
020	-14	7/8	22	0.86	21.80	0.07	1.78	90-durometer Nitrile
021	-16	1	25	0.93	23.50	0.07	1.78	90-durometer Nitrile
025	-20	1 1/4	28, 30, 32	1.18	29.90	0.07	1.78	90-durometer Nitrile
029	-24	1 1/2	35, 38	1.49	37.80	0.07	1.78	90-durometer Nitrile
135	-32	2	50	1.93	49.00	0.10	2.54	90-durometer Nitrile



## Warranty

### MANUFACTURER'S LIMITED WARRANTY

BLUE DIAMOND® ATTACHMENTS, a manufacturer of quality attachments, warrants new BLUE DIAMOND® ATTACHMENTS products and/or attachments at the time of delivery to the original purchaser, to be free from defects in material and workmanship when properly set up and operated in accordance with the recommendations set forth by BLUE DIAMOND® ATTACHMENTS, LLC.

BLUE DIAMOND® ATTACHMENTS liability for any defect with respect to accepted goods shall be limited to repairing the goods at a BLUE DIAMOND® ATTACHMENTS designated location or at an authorized dealer location, or replacing them, as BLUE DIAMOND® ATTACHMENTS shall elect. The above shall be in accordance with BLUE DIAMOND® ATTACHMENTS warranty adjustment policies. BLUE DIAMOND® ATTACHMENTS obligation shall terminate twelve (12) months for the Extreme Duty Stump Grinder after the delivery of the goods to original purchaser.

This warranty shall not apply to any machine or attachment which shall have been repaired or altered outside the BLUE DIAMOND® ATTACHMENTS factory or authorized BLUE DIAMOND® ATTACHMENTS dealership or in any way so as in BLUE DIAMOND® ATTACHMENTS judgment, to affect its stability or reliability, nor which has been subject to misuse, negligence or accident beyond the company recommended machine rated capacity.

### WARRANTY CLAIM

To submit a warranty claim, a claim must be filed with BLUE DIAMOND® ATTACHMENTS before work is performed. The BLUE DIAMOND® PRODUCT SUPPORT TEAM will advise repairs and applicable parts exchanges. Tampering with the failed part may void the warranty. This warranty does not include freight or delivery charges incurred when returning machinery for servicing. Dealer mileage, service calls, and pickup/delivery charges are the customers' responsibility.

### EXCLUSIONS OF WARRANTY

Except as otherwise expressly stated herein, BLUE DIAMOND® ATTACHMENTS makes no representation or warranty of any kind, expressed or implied, AND MAKES NO WARRANTY OF MERCHANTABILITY IN RESPECT TO ITS MACHINERY AND/OR ATTACHMENTS ARE FIT FOR ANY PARTICULAR PURPOSE. BLUE DIAMOND® ATTACHMENTS shall not be liable for incidental or consequential damages for any breach or warranty, including but not limited to inconvenience, rental of replacement equipment, loss of profits or other commercial loss. Upon purchase, the buyer assumes all liability for all personal injury and property resulting from the handling, possession, or use of the goods by the buyer.

No agent, employee, or representative of BLUE DIAMOND® ATTACHMENTS has any authority to bind BLUE DIAMOND® ATTACHMENTS to any affirmation, representation, or warranty concerning its machinery and/or attachments except as specifically set forth herein.

This warranty policy supersedes any previous documents.

**NOTE:** Blue Diamond® Attachments is a trademark of BLUE DIAMOND® ATTACHMENTS



**QUALITY | DEPENDABILITY | INTEGRITY**

Blue Diamond® Attachments  
4512 Anderson Road, Knoxville, TN 37918  
888-376-7027