

# HAY SPEARS



## SINGLE HAY SPEAR

- Standard and heavy duty stabilizers
- 3,500 lbs capacity
- Optional bolt-on rack

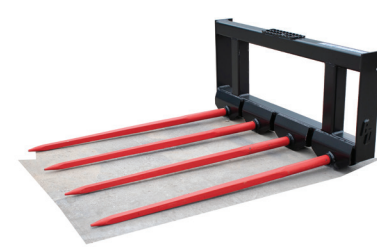
SPEAR LENGTH	PRODUCT #
48"	311006 STD Stabilizers
36"	311003 HD Stabilizers



## DOUBLE BOTTOM HAY SPEAR

- Double bottom spears
- 3,500 lbs capacity
- Optional bolt-on rack

SPEAR LENGTH	PRODUCT #
36"	311009 Short Spears
48"	311010 Standard Spears
48"	311011 w/ Rack
48"	311040 w/ Bottom Stabilizers



## QUAD BOTTOM HAY SPEAR

- Available in 45", 60", and 75" widths
- 3,500 lbs capacity
- Full size 48" spears
- Optional bolt-on rack

SPEAR LENGTH	PRODUCT #
48"	311045 45" wide
48"	311050 60" wide
48"	311060 75" wide



Standard Stabilizer  
1" diameter



Heavy Duty Stabilizer  
1 1/2" diameter



Call **888-376-7027** for more information on Blue Diamond® Attachments complete line of pallet fork and hay spear attachments!



## ABOUT BLUE DIAMOND® ATTACHMENTS

Blue Diamond® Attachments is a trusted and reliable company. Established in 1995, Blue Diamond® is a widely recognized name in the global attachments industry. We are committed to unparalleled customer service from the very first call to the after-sale follow-up and service.

In today's fast-paced environment, delivering quickly and on time are key to success. Blue Diamond® Attachments is very different in the fact that we stock thousands of finished products in our warehouses every day ready to ship. This results in a big advantage for our customers with many shipments leaving in 2–3 days. Our Tennessee facilities alone are now over 250,000-square-foot situated on 32 acres. These facilities, along with streamlined processes, allow most of our orders to leave our facility within 10 days.

YOUR AUTHORIZED BLUE DIAMOND DEALER IS:

Our parts department keeps thousands of replacement parts at the ready and strives to ship all parts orders received before noon the same day the order is placed! Tracking numbers are sent to our customer the day after the shipment leaves our dock.

We are located in Knoxville, Tennessee. This central location allows our products to reach more than half of the United States population within 2–3 days' shipping time. We have many loading docks, which allow us to keep trailers from several freight companies, making use of the best freight lines available. In addition, we are the only 1-day point of export to multiple foreign ports.



4512 Anderson Road | Knoxville, TN 37918  
ph 888-376-7027 | fax 865-246-2007



©2023 Blue Diamond® Attachments.  
All Rights Reserved.

888-376-7027

info@bluediamondattachments.com

BlueDiamondAttachments.com

865-246-2007

4512 Anderson Rd., Knoxville, TN 37918

Monday - Friday, 7am - 6pm EST



## PALLET FORK & HAY SPEAR ATTACHMENT GUIDE



BlueDiamondAttachments.com



COMPLETE ATTACHMENT SOLUTIONS

## PALLET FORKS



### LIGHT DUTY

- Lightweight
- 2,000 lbs capacity
- Excellent visibility
- Fits Class 2 fork tines

TINE SIZE	PRODUCT #
36" x 1 1/2"	314061
42" x 1 1/4"	314003
48" x 1 1/2"	314060



### STANDARD DUTY

- Rail-mount tines
- Easy to adjust
- 4,000 lbs capacity
- Non-floating tines
- Fits Class 2 fork tines

TINE SIZE	PRODUCT #
48" x 1 1/2"	314004
60" x 1 1/2"	314070
72" x 1 3/4"	314075



### HEAVY DUTY

- Reinforced back rest
- Added plate in quick attach
- 5,000 lbs capacity
- Side steps standard
- Fits Class 2 fork tines

TINE SIZE	PRODUCT #
48" x 1 1/2"	314011
60" x 1 1/2"	314085
48" x 1 3/4"	314013
60" x 1 3/4"	314014
72" x 1 3/4"	314090

## HYDRAULIC PALLET FORKS



### HEAVY DUTY STANDARD

- Adjusts hydraulically from 8" to 40" on center
- Offers great visibility
- Includes hoses and couplers
- 4,000 lbs capacity
- 48" tines

TINE SIZE	PRODUCT #
48"	114045
60"	114047



### SEVERE DUTY

- Adjusts hydraulically
- Offers great visibility
- Walk-through frame
- Includes hoses and couplers
- 6,000 lbs capacity
- Choice of 48" or 60" tines

TINE SIZE	PRODUCT #
48"	114050
60"	114055
72"	114057



## HYDRAULIC PALLET FORKS



### LOW PROFILE

- Non-floating tines are hooked in at top and bottom
- Durable backrest on standard model
- Fork tines lock in multiple positions
- Fork tines are available from 36" to 48" long
- 3,000 lbs capacity
- 2-year warranty

TINE SIZE	PRODUCT #
36" x 1 1/4"	313940
42" x 1 1/4"	313950
48" x 1 1/2"	313970

Specify machine mount.

### STANDARD DUTY



### MINI NURSERY FORK

- 45" long tines
- 42.6" wide (at tips)
- 2 3/4" closed (at tips)
- 50" tall backrest
- 2,000 lbs capacity

Product # 114088

TINE SIZE	PRODUCT #
36" x 1 1/4"	314002
42" x 1 1/4"	314001
48" x 1 1/2"	314000



### MINI GRAPPLE FORK

- 36" top clamp
- Greaseable pivot pins
- 3,000 lbs capacity
- Includes hoses and couplers

TINE SIZE	PRODUCT #
36"	306000
42"	306005

Specify machine mount.

## SPECIALTY PALLET FORKS



### MAT GRAPPLE

- Designed for equipment mats
- 42", 48", or 60" tines
- Special top clamp for holding mats
- 4-position top clamp
- Teeth on grapple for gripping mats
- 4,000 lbs capacity
- Fits Class 2 fork tines
- Tines do not adjust

TINE SIZE	PRODUCT #
48" x 1 3/4"	106007
60" x 1 3/4"	106006
72" x 1 3/4"	106005



### GRAPPLE FORK

- 4-position top clamps
- 48", 60", 72", 84", and 96" tines available
- 45" wide
- 3-position top clamp with adjustments
- Hoses and couplers included
- Fits Class 2 fork tines

TINE SIZE	PRODUCT #
48" x 1 3/4"	106007
60" x 1 3/4"	106006
72" x 1 3/4"	106005



Product # 106012

### BLOCK & BRICK FORK TINES

- Tines fit any Class 2 fork frame
- 3,600 - 4,800 lbs capacity

TINE SIZE	PRODUCT #
42" x 2" x 1 1/2"	114175
48" x 2" x 1 1/2"	114178
42" x 2" x 2"	114180
48" x 2" x 2"	114185

Please specify which frame you want.



### WALK-THROUGH

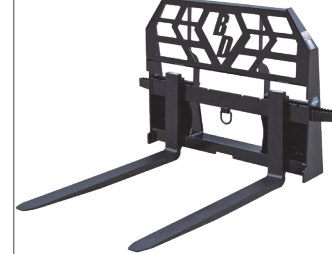
- Split back rest for easy access to your machine
- 4,200 and 5,000 lbs capacity
- Reinforced quick attach area
- No slip safety tread
- Fits Class 2 fork tines

#### 4,200 LBS CAPACITY

TINE SIZE	PRODUCT #
48" x 1 1/2"	314009
60" x 1 1/2"	314100

#### 5,000 LBS CAPACITY

TINE SIZE	PRODUCT #
48" x 1 1/2"	314008
60" x 1 1/2"	314110



### HEAVY DUTY D-RING

- 4" carriage bar
- Excellent visibility
- Side steps for easy access to your machine
- 45" wide (outside of tine measurement)
- 38" tall
- 5,500 and 6,000 lbs capacity

TINE SIZE	PRODUCT #
48" x 1 1/2"	314020
60" x 1 1/2"	314022
42" x 1 3/4"	314024
48" x 1 3/4"	314019
60" x 1 3/4"	314021
72" x 1 3/4"	314023



### WIDE FRAME

- Optional reinforced back rest
- Added plate in quick attach
- 5,500 lbs capacity
- Fits Class 2 fork tines
- 60" or 72" widths

#### 60" WIDTH

TINE SIZE	PRODUCT #
48" x 1 3/4"	314123
60" x 1 3/4"	314125
72" x 1 3/4"	314127

#### 72" WIDTH

TINE SIZE	PRODUCT #
48" x 1 3/4"	314032
60" x 1 3/4"	314028
72" x 1 3/4"	314029



### CLASS 3

- 10,000 lbs capacity
- 48", 60" and 72" length tines available
- Back rest design fits multiple applications
- 50" wide frame
- Fork dimensions: 2" x 5"

TINE SIZE	PRODUCT #
48" x 1 3/4"	314150
60" x 1 3/4"	314152
60" x 2"	314155
72" x 2"	314160
84" x 2"	314165
96" x 2"	314167



### STANDARD DUTY NURSERY FORK

- Holds up to a 44" tree ball
- 65" long tines
- 70" wide (at tips)
- 10" closed (at tips)
- 80" length
- 2,500 lbs capacity

Product # 114092



### SEVERE DUTY NURSERY FORK

- Internal preprotected hose
- Greasable pivots
- Hose saver spring
- Safety step
- Foam tree trunk protection on cradle
- Left or right routing
- 54" wide (at tips)
- 6" closed (at tips)
- 86 1/2" length
- 3,000 lbs capacity

Product # 114095